

Biglycan Antibody
Rabbit mAb
Catalog # AP91844**Specification**

Biglycan Antibody - Product Information

Application	WB, FC, IP
Primary Accession	P21810
Reactivity	Rat
Clonality	Monoclonal

Other Names

BGN; Biglycan; DSPG1; PG S1; PGI; SEMDX; SLRR1A;

Isotype	Rabbit IgG
Host	Rabbit
Calculated MW	41654 Da

Biglycan Antibody - Additional Information

Dilution	WB~~1:1000 FC~~1:10~50 IP~~N/A
Purification	Affinity-chromatography
Immunogen	A synthesized peptide derived from human Biglycan
Description	May be involved in collagen fiber assembly.
Storage Condition and Buffer	Rabbit IgG in phosphate buffered saline , pH 7.4, 150mM NaCl, 0.02% sodium azide and 50% glycerol. Store at +4°C short term. Store at -20°C long term. Avoid freeze / thaw cycle.

Biglycan Antibody - Protein Information**Name** BGN**Synonyms** SLRR1A**Function**

May be involved in collagen fiber assembly.

Cellular Location

Secreted, extracellular space, extracellular matrix

Tissue Location

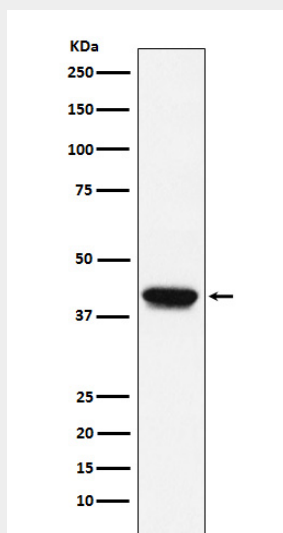
Detected in placenta (at protein level) (PubMed:32337544). Found in several connective tissues, especially in articular cartilages.

Biglycan Antibody - Protocols

Provided below are standard protocols that you may find useful for product applications.

- [Western Blot](#)
- [Blocking Peptides](#)
- [Dot Blot](#)
- [Immunohistochemistry](#)
- [Immunofluorescence](#)
- [Immunoprecipitation](#)
- [Flow Cytometry](#)
- [Cell Culture](#)

Biglycan Antibody - Images



Western blot analysis of Biglycan expression in C2C12 cell lysate.