

**Complement C3 Antibody**  
**Rabbit mAb**  
**Catalog # AP91846****Specification**

---

**Complement C3 Antibody - Product Information**

Application	WB, FC, ICC
Primary Accession	<a href="#">P01024</a>
Clonality	Monoclonal
<b>Other Names</b>	
AHUS5; ARMD9; ASP; C3; C3adesArg; C3bc; CPAMD1; Plp;	
Isotype	Rabbit IgG
Host	Rabbit
Calculated MW	187148 Da

**Complement C3 Antibody - Additional Information**

Dilution	WB~~1:1000 FC~~1:10~50 ICC~~N/A
Purification	Affinity-chromatography
Immunogen	A synthesized peptide derived from human C3 / C3a
Description	C3 plays a central role in the activation of the complement system. Its processing by C3 convertase is the central reaction in both classical and alternative complement pathways. After activation C3b can bind covalently, via its reactive thioester, to cell surface carbohydrates or immune aggregates.
Storage Condition and Buffer	Rabbit IgG in phosphate buffered saline , pH 7.4, 150mM NaCl, 0.02% sodium azide and 50% glycerol. Store at +4°C short term. Store at -20°C long term. Avoid freeze / thaw cycle.

**Complement C3 Antibody - Protein Information**

**Name** C3 {ECO:0000303|PubMed:2579379, ECO:0000312|HGNC:HGNC:1318}

**Function**

Precursor of non-enzymatic components of the classical, alternative, lectin and GZMK complement pathways, which consist in a cascade of proteins that leads to phagocytosis and breakdown of pathogens and signaling that strengthens the adaptive immune system.

**Cellular Location**

Secreted. [C3a anaphylatoxin]: Secreted

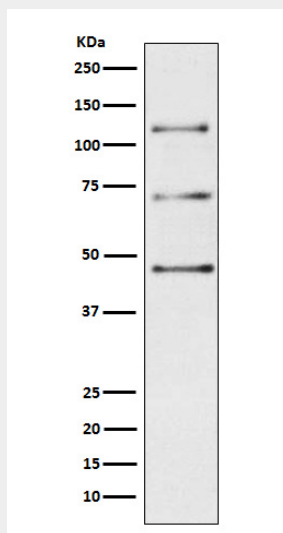
**Tissue Location**

Plasma..

**Complement C3 Antibody - Protocols**

Provided below are standard protocols that you may find useful for product applications.

- [Western Blot](#)
- [Blocking Peptides](#)
- [Dot Blot](#)
- [Immunohistochemistry](#)
- [Immunofluorescence](#)
- [Immunoprecipitation](#)
- [Flow Cytometry](#)
- [Cell Culture](#)

**Complement C3 Antibody - Images**

Western blot analysis of C3 / C3a expression in Human plasma lysate.