

NM23A Antibody
Rabbit mAb
Catalog # AP91847

Specification

NM23A Antibody - Product Information

Application **WB, IHC, FC, ICC**
Primary Accession [P15531](#)
Clonality **Monoclonal**
Other Names
NB; AWD; NBS; GAAD; NM23; NDPKA; NDPK-A; NM23-H1; NME1;

Isotype **Rabbit IgG**
Host **Rabbit**
Calculated MW **17149 Da**

NM23A Antibody - Additional Information

Dilution **WB~~1:1000**
IHC~~1:100~500
FC~~1:10~50
ICC~~N/A

Purification **Affinity-chromatography**
Immunogen **A synthesized peptide derived from human NM23A**

Description **Major role in the synthesis of nucleoside triphosphates other than ATP. Possesses nucleoside-diphosphate kinase, serine/threonine-specific protein kinase, geranyl and farnesyl pyrophosphate kinase, histidine protein kinase and 3'-5' exonuclease activities.**

Storage Condition and Buffer **Rabbit IgG in phosphate buffered saline , pH 7.4, 150mM NaCl, 0.02% sodium azide and 50% glycerol. Store at +4°C short term. Store at -20°C long term. Avoid freeze / thaw cycle.**

NM23A Antibody - Protein Information

Name NME1

Synonyms NDPKA, NM23

Function

Major role in the synthesis of nucleoside triphosphates other than ATP. The ATP gamma phosphate is transferred to the NDP beta phosphate via a ping-pong mechanism, using a phosphorylated active-site intermediate. Possesses nucleoside-diphosphate kinase, serine/threonine-specific protein kinase, geranyl and farnesyl pyrophosphate kinase, histidine protein kinase and 3'-5'

exonuclease activities. Involved in cell proliferation, differentiation and development, signal transduction, G protein-coupled receptor endocytosis, and gene expression. Required for neural development including neural patterning and cell fate determination. During GZMA- mediated cell death, works in concert with TREX1. NME1 nicks one strand of DNA and TREX1 removes bases from the free 3' end to enhance DNA damage and prevent DNA end reannealing and rapid repair.

Cellular Location

Cytoplasm. Nucleus. Note=Cell-cycle dependent nuclear localization which can be induced by interaction with Epstein-barr viral proteins or by degradation of the SET complex by GzmA

Tissue Location

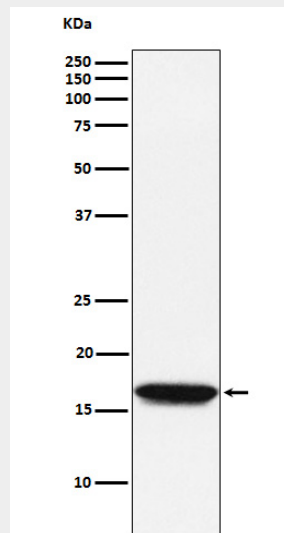
Isoform 1 is expressed in heart, brain, placenta, lung, liver, skeletal muscle, pancreas, spleen and thymus. Expressed in lung carcinoma cell lines but not in normal lung tissues. Isoform 2 is ubiquitously expressed and its expression is also related to tumor differentiation.

NM23A Antibody - Protocols

Provided below are standard protocols that you may find useful for product applications.

- [Western Blot](#)
- [Blocking Peptides](#)
- [Dot Blot](#)
- [Immunohistochemistry](#)
- [Immunofluorescence](#)
- [Immunoprecipitation](#)
- [Flow Cytometry](#)
- [Cell Culture](#)

NM23A Antibody - Images



Western blot analysis of NM23A expression in Jurkat cell lysate.