

Fibrinogen gamma chain Antibody
Rabbit mAb
Catalog # AP91849**Specification**

Fibrinogen gamma chain Antibody - Product Information

Application	WB, FC
Primary Accession	P02679
Clonality	Monoclonal
Other Names	
FGG; Fibrinogen gamma chain;	
Isotype	Rabbit IgG
Host	Rabbit
Calculated MW	51512 Da

Fibrinogen gamma chain Antibody - Additional Information

Dilution	WB~~1:1000 FC~~1:10~50
Purification	Affinity-chromatography
Immunogen	A synthesized peptide derived from human Fibrinogen gamma chain
Description	Fibrinogen has a double function: yielding monomers that polymerize into fibrin and acting as a cofactor in platelet aggregation.
Storage Condition and Buffer	Rabbit IgG in phosphate buffered saline , pH 7.4, 150mM NaCl, 0.02% sodium azide and 50% glycerol. Store at +4°C short term. Store at -20°C long term. Avoid freeze / thaw cycle.

Fibrinogen gamma chain Antibody - Protein Information**Name** FGG**Function**

Together with fibrinogen alpha (FGA) and fibrinogen beta (FGB), polymerizes to form an insoluble fibrin matrix. Has a major function in hemostasis as one of the primary components of blood clots. In addition, functions during the early stages of wound repair to stabilize the lesion and guide cell migration during re-epithelialization. Was originally thought to be essential for platelet aggregation, based on in vitro studies using anticoagulated blood. However, subsequent studies have shown that it is not absolutely required for thrombus formation in vivo. Enhances expression of SELP in activated platelets via an ITGB3-dependent pathway. Maternal fibrinogen is essential for successful pregnancy. Fibrin deposition is also associated with infection, where it protects against IFNG-mediated hemorrhage. May also facilitate the antibacterial immune response via both innate and T-cell mediated pathways.

Cellular Location

Secreted

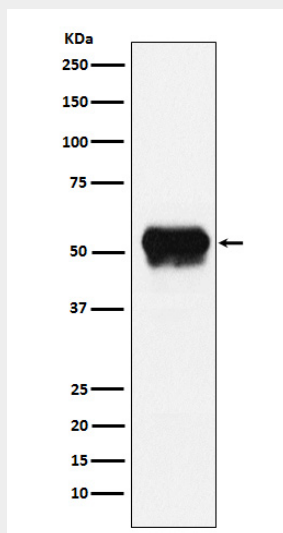
Tissue Location

Detected in blood plasma (at protein level).

Fibrinogen gamma chain Antibody - Protocols

Provided below are standard protocols that you may find useful for product applications.

- [Western Blot](#)
- [Blocking Peptides](#)
- [Dot Blot](#)
- [Immunohistochemistry](#)
- [Immunofluorescence](#)
- [Immunoprecipitation](#)
- [Flow Cytometry](#)
- [Cell Culture](#)

Fibrinogen gamma chain Antibody - Images

Western blot analysis of Fibrinogen gamma chain expression in Human plasma lysate.