

RanGAP1 Antibody
Rabbit mAb
Catalog # AP91858**Specification**

RanGAP1 Antibody - Product Information

| | |
|--------------------|------------------------|
| Application | WB, IHC, FC, ICC, IP |
| Primary Accession | P46060 |
| Reactivity | Rat |
| Clonality | Monoclonal |
| Other Names | |
| SD; Fug1; RANGAP; | |

| | |
|---------------|------------|
| Isotype | Rabbit IgG |
| Host | Rabbit |
| Calculated MW | 63542 Da |

RanGAP1 Antibody - Additional Information

| | |
|------------------------------|---|
| Dilution | WB~~1:1000 IHC~~1:100~500 FC~~1:10~50 ICC~~N/A IP~~N/A |
| Purification | Affinity-chromatography |
| Immunogen | A synthesized peptide derived from human RanGAP1 |
| Description | GTPase activator for the nuclear Ras-related regulatory protein Ran, converting it to the putatively inactive GDP-bound state. |
| Storage Condition and Buffer | Rabbit IgG in phosphate buffered saline , pH 7.4, 150mM NaCl, 0.02% sodium azide and 50% glycerol. Store at +4°C short term. Store at -20°C long term. Avoid freeze / thaw cycle. |

RanGAP1 Antibody - Protein Information**Name** RANGAP1**Synonyms** KIAA1835, SD**Function**

GTPase activator for RAN (PubMed:<[a href="http://www.uniprot.org/citations/16428860"](http://www.uniprot.org/citations/16428860)target="_blank">16428860, PubMed:<[a href="http://www.uniprot.org/citations/8146159"](http://www.uniprot.org/citations/8146159)target="_blank">8146159, PubMed:<[a href="http://www.uniprot.org/citations/8896452"](http://www.uniprot.org/citations/8896452)target="_blank">8896452). Converts cytoplasmic GTP-bound RAN to GDP-bound RAN, which is essential for RAN-mediated nuclear import and export (PubMed:27160050, PubMed:8896452). Mediates dissociation of cargo from nuclear export complexes containing XPO1, RAN and RANBP2 after nuclear export (PubMed:27160050).

Cellular Location

Cytoplasm. Nucleus, nucleoplasm. Nucleus envelope. Chromosome, centromere, kinetochore. Cytoplasm, cytoskeleton, spindle. Note=Cytoplasmic during interphase Detected at the nuclear envelope during interphase (PubMed:11854305, PubMed:15037602). Targeted to the nuclear pores after sumoylation (PubMed:11854305). During mitosis, associates with mitotic spindles, but is essentially not detected at the spindle poles (PubMed:11854305, PubMed:15037602). Association with kinetochores appears soon after nuclear envelope breakdown and persists until late anaphase (PubMed:11854305). Mitotic location also requires sumoylation (PubMed:11854305).

Tissue Location

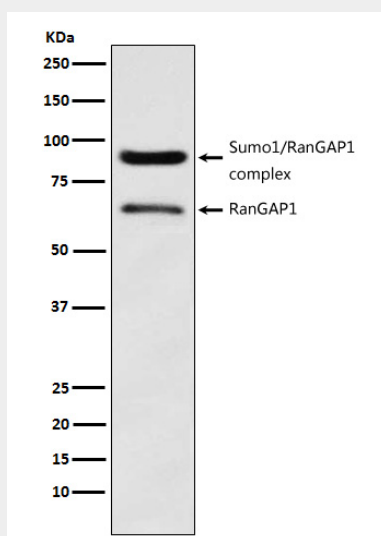
Highly expressed in brain, thymus and testis.

RanGAP1 Antibody - Protocols

Provided below are standard protocols that you may find useful for product applications.

- [Western Blot](#)
- [Blocking Peptides](#)
- [Dot Blot](#)
- [Immunohistochemistry](#)
- [Immunofluorescence](#)
- [Immunoprecipitation](#)
- [Flow Cytometry](#)
- [Cell Culture](#)

RanGAP1 Antibody - Images



Western blot analysis of RanGAP1 expression in HeLa cell lysate.