

IGFBP2 Antibody
Rabbit mAb
Catalog # AP91860

Specification

IGFBP2 Antibody - Product Information

Application	WB, IHC
Primary Accession	P18065
Clonality	Monoclonal
Other Names	
BP2; IBP2; IGF BP53; IGFBP2; IGFBP53;	
Isotype	Rabbit IgG
Host	Rabbit
Calculated MW	34814 Da

IGFBP2 Antibody - Additional Information

Dilution	WB~~1:1000 IHC~~1:100~500
Purification	Affinity-chromatography
Immunogen	A synthesized peptide derived from human IGFBP2
Description	Inhibits IGF-mediated growth and developmental rates. IGF-binding proteins prolong the half-life of the IGFs and have been shown to either inhibit or stimulate the growth promoting effects of the IGFs on cell culture. They alter the interaction of IGFs with their cell surface receptors.
Storage Condition and Buffer	Rabbit IgG in phosphate buffered saline , pH 7.4, 150mM NaCl, 0.02% sodium azide and 50% glycerol. Store at +4°C short term. Store at -20°C long term. Avoid freeze / thaw cycle.

IGFBP2 Antibody - Protein Information

Name IGFBP2

Synonyms BP2, IBP2

Function

Multifunctional protein that plays a critical role in regulating the availability of IGFs such as IGF1 and IGF2 to their receptors and thereby regulates IGF-mediated cellular processes including proliferation, differentiation, and apoptosis in a cell-type specific manner (PubMed:18563800, PubMed:38796567). Functions coordinately with receptor protein tyrosine phosphatase beta/PTPRB and the IGF1 receptor to

regulate IGF1-mediated signaling by stimulating the phosphorylation of PTEN leading to its inactivation and AKT1 activation (PubMed:22869525). Plays a positive role in cell migration via interaction with integrin alpha5/ITGA5 through an RGD motif (PubMed:16569642). Additionally, interaction with ITGA5/ITGB1 enhances the adhesion of endothelial progenitor cells to endothelial cells (PubMed:26076738). Upon mitochondrial damage, facilitates apoptosis with ITGA5 of podocytes, and then activates the phosphorylation of focal adhesion kinase (FAK)-mediated mitochondrial injury (PubMed:38796567).

Cellular Location

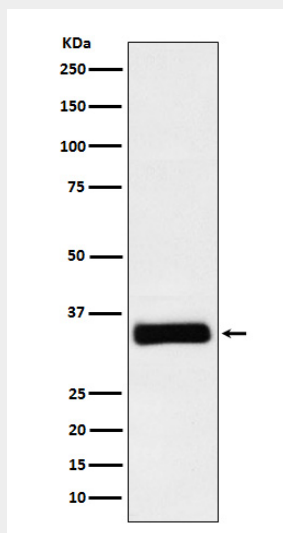
Secreted

IGFBP2 Antibody - Protocols

Provided below are standard protocols that you may find useful for product applications.

- [Western Blot](#)
- [Blocking Peptides](#)
- [Dot Blot](#)
- [Immunohistochemistry](#)
- [Immunofluorescence](#)
- [Immunoprecipitation](#)
- [Flow Cytometry](#)
- [Cell Culture](#)

IGFBP2 Antibody - Images



Western blot analysis of IGFBP2 expression in SH-SY5Y cell lysate.