

RbAp48 Antibody
Rabbit mAb
Catalog # AP91861**Specification**

RbAp48 Antibody - Product Information

Application	WB, IHC, FC, ICC, IP
Primary Accession	Q09028
Reactivity	Rat
Clonality	Monoclonal
Other Names	
CAF I p48; CAF-I p48; NURF55; RBAP48; RBBP4;	
Isotype	Rabbit IgG
Host	Rabbit
Calculated MW	47656 Da

RbAp48 Antibody - Additional Information

Dilution	WB~~1:1000 IHC~~1:100~500 FC~~1:10~50 ICC~~N/A IP~~N/A
Purification	Affinity-chromatography
Immunogen	A synthesized peptide derived from human RbAp48
Description	Core histone-binding subunit that may target chromatin assembly factors, chromatin remodeling factors and histone deacetylases to their histone substrates in a manner that is regulated by nucleosomal DNA. Component of several complexes which regulate chromatin metabolism.
Storage Condition and Buffer	Rabbit IgG in phosphate buffered saline , pH 7.4, 150mM NaCl, 0.02% sodium azide and 50% glycerol. Store at +4°C short term. Store at -20°C long term. Avoid freeze / thaw cycle.

RbAp48 Antibody - Protein Information**Name** RBBP4**Synonyms** RBAP48**Function**

Core histone-binding subunit that may target chromatin assembly factors, chromatin remodeling factors and histone deacetylases to their histone substrates in a manner that is regulated by

nucleosomal DNA (PubMed:10866654). Component of the chromatin assembly factor 1 (CAF-1) complex, which is required for chromatin assembly following DNA replication and DNA repair (PubMed:8858152). Component of the core histone deacetylase (HDAC) complex, which promotes histone deacetylation and consequent transcriptional repression (PubMed:9150135). Component of the nucleosome remodeling and histone deacetylase complex (the NuRD complex), which promotes transcriptional repression by histone deacetylation and nucleosome remodeling (PubMed:16428440, PubMed:28977666, PubMed:39460621). Component of the PRC2 complex, which promotes repression of homeotic genes during development (PubMed:29499137, PubMed:31959557). Component of the NURF (nucleosome remodeling factor) complex (PubMed:14609955, PubMed:15310751).

Cellular Location

Nucleus. Chromosome, telomere. Note=Localizes to chromatin as part of the PRC2 complex.

Tissue Location

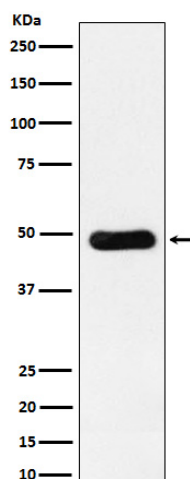
Expressed in neuroblastoma cells.

RbAp48 Antibody - Protocols

Provided below are standard protocols that you may find useful for product applications.

- [Western Blot](#)
- [Blocking Peptides](#)
- [Dot Blot](#)
- [Immunohistochemistry](#)
- [Immunofluorescence](#)
- [Immunoprecipitation](#)
- [Flow Cytometry](#)
- [Cell Culture](#)

RbAp48 Antibody - Images



Western blot analysis of RbAp48 expression in Jurkat cell lysate.