

Plexin A1 Antibody
Rabbit mAb
Catalog # AP91862

Specification

Plexin A1 Antibody - Product Information

Application	WB, FC, ICC
Primary Accession	O9UIW2
Reactivity	Rat
Clonality	Monoclonal

Other Names

NOV; NOV; Plexin-A1; Plexin1; PlexinA1; PLXN1; Plxna1;

Isotype	Rabbit IgG
Host	Rabbit
Calculated MW	211067 Da

Plexin A1 Antibody - Additional Information

Dilution	WB~~1:1000 FC~~1:10~50 ICC~~N/A
Purification	Affinity-chromatography
Immunogen	A synthesized peptide derived from human Plexin A1
Description	Plays a role in axon guidance, invasive growth and cell migration.
Storage Condition and Buffer	Rabbit IgG in phosphate buffered saline , pH 7.4, 150mM NaCl, 0.02% sodium azide and 50% glycerol. Store at +4°C short term. Store at -20°C long term. Avoid freeze / thaw cycle.

Plexin A1 Antibody - Protein Information

Name PLXNA1 ([HGNC:9099](#))

Synonyms NOV, PLXN1

Function

Coreceptor for SEMA3A, SEMA3C, SEMA3F and SEMA6D. Necessary for signaling by class 3 semaphorins and subsequent remodeling of the cytoskeleton. Plays a role in axon guidance, invasive growth and cell migration. Class 3 semaphorins bind to a complex composed of a neuropilin and a plexin. The plexin modulates the affinity of the complex for specific semaphorins, and its cytoplasmic domain is required for the activation of down-stream signaling events in the cytoplasm. Acts as coreceptor of TREM2 for SEMA6D in dendritic cells and is involved in the generation of immune responses and skeletal homeostasis.

Cellular Location

Cell membrane {ECO:0000250|UniProtKB:P70206}; Single-pass type I membrane protein

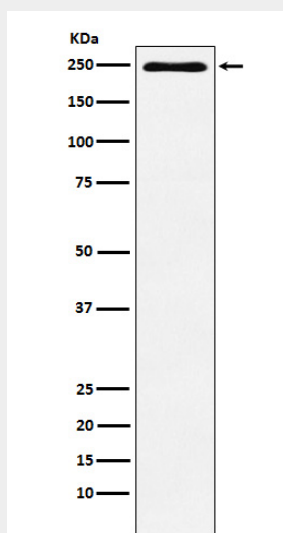
Tissue Location

Detected in fetal brain, lung, liver and kidney.

Plexin A1 Antibody - Protocols

Provided below are standard protocols that you may find useful for product applications.

- [Western Blot](#)
- [Blocking Peptides](#)
- [Dot Blot](#)
- [Immunohistochemistry](#)
- [Immunofluorescence](#)
- [Immunoprecipitation](#)
- [Flow Cytometry](#)
- [Cell Culture](#)

Plexin A1 Antibody - Images

Western blot analysis of Plexin A1 expression in HUVEC cell lysate.