

HIF1AN Antibody
Rabbit mAb
Catalog # AP91867

Specification

HIF1AN Antibody - Product Information

Application	WB, IHC, FC, ICC
Primary Accession	Q9NWT6
Clonality	Monoclonal
Other Names	
FIH 1; FIH1; HIF1AN;	
Isotype	Rabbit IgG
Host	Rabbit
Calculated MW	40285 Da

HIF1AN Antibody - Additional Information

Dilution	WB~~1:1000 IHC~~1:100~500 FC~~1:10~50 ICC~~N/A
Purification	Affinity-chromatography
Immunogen	A synthesized peptide derived from human HIF1AN
Description	Hydroxylates HIF-1 alpha at 'Asp-803' in the C-terminal transactivation domain (CAD). Functions as an oxygen sensor and, under normoxic conditions, the hydroxylation prevents interaction of HIF-1 with transcriptional coactivators including Cbp/p300-interacting transactivator.
Storage Condition and Buffer	Rabbit IgG in phosphate buffered saline , pH 7.4, 150mM NaCl, 0.02% sodium azide and 50% glycerol. Store at +4°C short term. Store at -20°C long term. Avoid freeze / thaw cycle.

HIF1AN Antibody - Protein Information

Name HIF1AN

Synonyms FIH1

Function

Hydroxylates HIF-1 alpha at 'Asn-803' in the C-terminal transactivation domain (CAD). Functions as an oxygen sensor and, under normoxic conditions, the hydroxylation prevents interaction of HIF-1 with transcriptional coactivators including Cbp/p300-interacting transactivator. Involved in transcriptional repression through interaction with HIF1A, VHL and histone deacetylases.

Hydroxylates specific Asn residues within ankyrin repeat domains (ARD) of NFKB1, NFKBIA, NOTCH1, ASB4, PPP1R12A and several other ARD-containing proteins. Also hydroxylates Asp and His residues within ARDs of ANK1 and TNKS2, respectively. Negatively regulates NOTCH1 activity, accelerating myogenic differentiation. Positively regulates ASB4 activity, promoting vascular differentiation.

Cellular Location

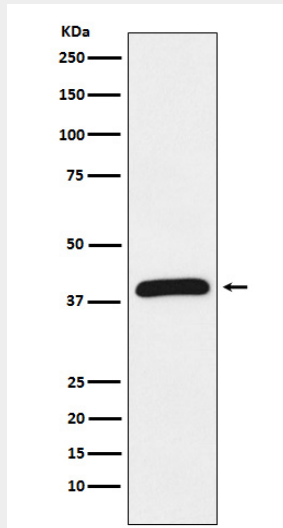
Nucleus. Cytoplasm. Cytoplasm, perinuclear region. Note=Mainly cytoplasmic localization, but interaction with NOTCH1 results in nuclear localization and interaction with ABPA3 results in perinuclear localization in macrophages

HIF1AN Antibody - Protocols

Provided below are standard protocols that you may find useful for product applications.

- [Western Blot](#)
- [Blocking Peptides](#)
- [Dot Blot](#)
- [Immunohistochemistry](#)
- [Immunofluorescence](#)
- [Immunoprecipitation](#)
- [Flow Cytometry](#)
- [Cell Culture](#)

HIF1AN Antibody - Images



Western blot analysis of HIF1AN expression in Jurkat cell lysate.