

**RhoGDI Antibody**  
**Rabbit mAb**  
**Catalog # AP91869****Specification**

---

**RhoGDI Antibody - Product Information**

Application	WB, IHC, ICC
Primary Accession	<a href="#">P52565</a>
Reactivity	Rat
Clonality	Monoclonal
<b>Other Names</b>	
ARHGDI; GDIA1; RHOGDI; RHOGDI-1;	

Isotype	Rabbit IgG
Host	Rabbit
Calculated MW	23207 Da

**RhoGDI Antibody - Additional Information**

Dilution	WB~~1:1000 IHC~~1:100~500 ICC~~N/A
Purification	Affinity-chromatography
Immunogen	A synthesized peptide derived from human RhoGDI
Description	Regulates the GDP/GTP exchange reaction of the Rho proteins by inhibiting the dissociation of GDP from them, and the subsequent binding of GTP to them.
Storage Condition and Buffer	Rabbit IgG in phosphate buffered saline , pH 7.4, 150mM NaCl, 0.02% sodium azide and 50% glycerol. Store at +4°C short term. Store at -20°C long term. Avoid freeze / thaw cycle.

**RhoGDI Antibody - Protein Information****Name** ARHGDI**Synonyms** GDIA1**Function**

Controls Rho proteins homeostasis. Regulates the GDP/GTP exchange reaction of the Rho proteins by inhibiting the dissociation of GDP from them, and the subsequent binding of GTP to them. Retains Rho proteins such as CDC42, RAC1 and RHOA in an inactive cytosolic pool, regulating their stability and protecting them from degradation. Actively involved in the recycling and distribution of activated Rho GTPases in the cell, mediates extraction from membranes of both inactive and activated molecules due its exceptionally high affinity for prenylated forms. Through the modulation of Rho proteins, may play a role in cell motility regulation. In glioma cells, inhibits cell

migration and invasion by mediating the signals of SEMA5A and PLXNB3 that lead to inactivation of RAC1.

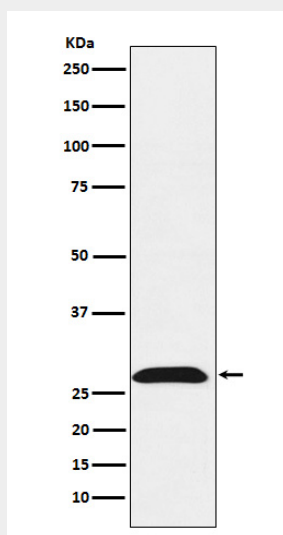
**Cellular Location**

Cytoplasm.

**RhoGDI Antibody - Protocols**

Provided below are standard protocols that you may find useful for product applications.

- [Western Blot](#)
- [Blocking Peptides](#)
- [Dot Blot](#)
- [Immunohistochemistry](#)
- [Immunofluorescence](#)
- [Immunoprecipitation](#)
- [Flow Cytometry](#)
- [Cell Culture](#)

**RhoGDI Antibody - Images**

Western blot analysis of RhoGDI expression in HeLa cell lysate.