

**P2Y6 Antibody**  
Rabbit mAb  
Catalog # AP91871

## Specification

---

### P2Y6 Antibody - Product Information

Application **WB, IHC, ICC, IP**  
Primary Accession [Q15077](#)  
Clonality **Monoclonal**  
**Other Names**  
P2ry6; P2Y6; P2Y6 receptor; PP2891;

Isotype **Rabbit IgG**  
Host **Rabbit**  
Calculated MW **36429 Da**

### P2Y6 Antibody - Additional Information

Purification **Affinity-chromatography**  
Immunogen **A synthesized peptide derived from human P2Y6**  
Description **Receptor for extracellular UDP > UTP > ATP. The activity of this receptor is mediated by G proteins which activate a phosphatidylinositol-calcium second messenger system.**  
Storage Condition and Buffer **Rabbit IgG in phosphate buffered saline , pH 7.4, 150mM NaCl, 0.02% sodium azide and 50% glycerol. Store at +4°C short term. Store at -20°C long term. Avoid freeze / thaw cycle.**

### P2Y6 Antibody - Protein Information

**Name** P2RY6

#### **Function**

Receptor for extracellular UDP > UTP > ATP. The activity of this receptor is mediated by G proteins which activate a phosphatidylinositol-calcium second messenger system.

#### **Cellular Location**

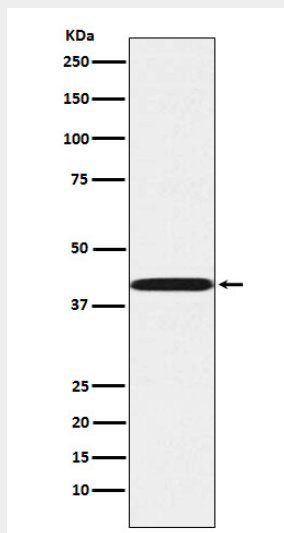
Cell membrane; Multi-pass membrane protein.

### P2Y6 Antibody - Protocols

Provided below are standard protocols that you may find useful for product applications.

- [Western Blot](#)
- [Blocking Peptides](#)
- [Dot Blot](#)
- [Immunohistochemistry](#)
- [Immunofluorescence](#)
- [Immunoprecipitation](#)
- [Flow Cytometry](#)
- [Cell Culture](#)

### P2Y6 Antibody - Images



Western blot analysis of P2Y6 expression in A549 cell lysate.