

**Creatine kinase B type Antibody**  
**Rabbit mAb**  
**Catalog # AP91876****Specification**

---

**Creatine kinase B type Antibody - Product Information**

Application	WB, IHC, FC, ICC, IP
Primary Accession	<a href="#">P12277</a>
Reactivity	Rat
Clonality	Monoclonal
<b>Other Names</b>	
BCK; Ckb; CKBB; HEL 211; HEL S 29;	

Isotype	Rabbit IgG
Host	Rabbit
Calculated MW	42644 Da

**Creatine kinase B type Antibody - Additional Information**

Dilution	WB~~1:1000 IHC~~1:100~500 FC~~1:10~50 ICC~~N/A IP~~N/A
Purification	Affinity-chromatography
Immunogen	A synthesized peptide derived from human Creatine kinase B type
Description	Reversibly catalyzes the transfer of phosphate between ATP and various phosphogens (e.g. creatine phosphate). Creatine kinase isoenzymes play a central role in energy transduction in tissues with large, fluctuating energy demands, such as skeletal muscle, heart, brain and spermatozoa.
Storage Condition and Buffer	Rabbit IgG in phosphate buffered saline , pH 7.4, 150mM NaCl, 0.02% sodium azide and 50% glycerol. Store at +4°C short term. Store at -20°C long term. Avoid freeze / thaw cycle.

**Creatine kinase B type Antibody - Protein Information****Name** CKB ([HGNC:1991](#))**Synonyms** CKBB**Function**

Reversibly catalyzes the transfer of phosphate between ATP and various phosphogens (e.g.

creatine phosphate) (PubMed:<a href="http://www.uniprot.org/citations/8186255" target="\_blank">8186255</a>). Creatine kinase isoenzymes play a central role in energy transduction in tissues with large, fluctuating energy demands, such as skeletal muscle, heart, brain and spermatozoa (Probable). Acts as a key regulator of adaptive thermogenesis as part of the futile creatine cycle: localizes to the mitochondria of thermogenic fat cells and acts by mediating phosphorylation of creatine to initiate a futile cycle of creatine phosphorylation and dephosphorylation (By similarity). During the futile creatine cycle, creatine and N-phosphocreatine are in a futile cycle, which dissipates the high energy charge of N- phosphocreatine as heat without performing any mechanical or chemical work (By similarity).

#### Cellular Location

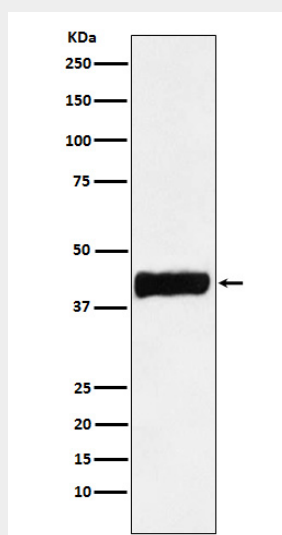
Cytoplasm, cytosol {ECO:0000250|UniProtKB:Q04447}. Mitochondrion {ECO:0000250|UniProtKB:Q04447}. Cell membrane. Note=Localizes to the mitochondria of thermogenic fat cells via the internal MTS-like signal (iMTS-L) region {ECO:0000250|UniProtKB:Q04447}

### Creatine kinase B type Antibody - Protocols

Provided below are standard protocols that you may find useful for product applications.

- [Western Blot](#)
- [Blocking Peptides](#)
- [Dot Blot](#)
- [Immunohistochemistry](#)
- [Immunofluorescence](#)
- [Immunoprecipitation](#)
- [Flow Cytometry](#)
- [Cell Culture](#)

### Creatine kinase B type Antibody - Images



Western blot analysis of Creatine kinase B type expression in SHSY5Y cell lysate.