

EGR2 Antibody
Rabbit mAb
Catalog # AP91877**Specification**

EGR2 Antibody - Product Information

Application	WB
Primary Accession	P11161
Reactivity	Rat
Clonality	Monoclonal
Other Names	
AT591; CMT1D; CMT4E;; egr2; KROX20;	
Isotype	Rabbit IgG
Host	Rabbit
Calculated MW	50302 Da

EGR2 Antibody - Additional Information

Dilution	WB~~1:1000
Purification	Affinity-chromatography
Immunogen	A synthesized peptide derived from human EGR2
Description	Sequence-specific DNA-binding transcription factor. Binds to two specific DNA sites located in the promoter region of HOXA4.
Storage Condition and Buffer	Rabbit IgG in phosphate buffered saline , pH 7.4, 150mM NaCl, 0.02% sodium azide and 50% glycerol. Store at +4°C short term. Store at -20°C long term. Avoid freeze / thaw cycle.

EGR2 Antibody - Protein Information**Name** EGR2**Synonyms** KROX20**Function**

Sequence-specific DNA-binding transcription factor (PubMed:17717711). Plays a role in hindbrain segmentation by regulating the expression of a subset of homeobox containing genes and in Schwann cell myelination by regulating the expression of genes involved in the formation and maintenance of myelin (By similarity). Binds to two EGR2- consensus sites EGR2A (5'-CTGTAGGAG-3') and EGR2B (5'-ATGTAGGTG-3') in the HOXB3 enhancer and promotes HOXB3 transcriptional activation (By similarity). Binds to specific DNA sites located in the promoter region of HOXA4, HOXB2 and ERBB2 (By similarity). Regulates hindbrain segmentation by controlling the expression of Hox genes, such as HOXA4, HOXB3 and HOXB2, and thereby specifying odd and

even rhombomeres (By similarity). Promotes the expression of HOXB3 in the rhombomere r5 in the hindbrain (By similarity). Regulates myelination in the peripheral nervous system after birth, possibly by regulating the expression of myelin proteins, such as MPZ, and by promoting the differentiation of Schwann cells (By similarity). Involved in the development of the jaw opener musculature, probably by playing a role in its innervation through trigeminal motor neurons (By similarity). May play a role in adipogenesis, possibly by regulating the expression of CEBPB (By similarity).

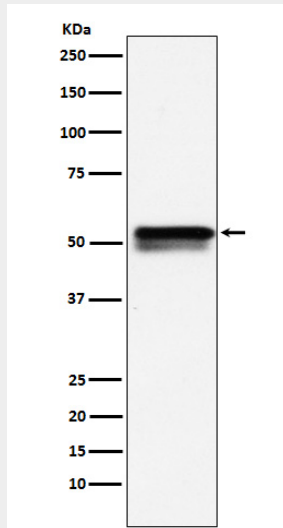
Cellular Location

Nucleus {ECO:0000250|UniProtKB:P08152}.

EGR2 Antibody - Protocols

Provided below are standard protocols that you may find useful for product applications.

- [Western Blot](#)
- [Blocking Peptides](#)
- [Dot Blot](#)
- [Immunohistochemistry](#)
- [Immunofluorescence](#)
- [Immunoprecipitation](#)
- [Flow Cytometry](#)
- [Cell Culture](#)

EGR2 Antibody - Images

Western blot analysis of EGR2 expression in LnCaP cell lysate.