

Prostatic Acid Phosphatase Antibody
Rabbit mAb
Catalog # AP91880**Specification**

Prostatic Acid Phosphatase Antibody - Product Information

Application	WB, IHC, ICC, IP
Primary Accession	P15309
Clonality	Monoclonal
Other Names	
ACP3; PAP; TMPase;	
Isotype	Rabbit IgG
Host	Rabbit
Calculated MW	44566 Da

Prostatic Acid Phosphatase Antibody - Additional Information

Dilution	WB~~1:1000 IHC~~1:100~500 ICC~~N/A IP~~N/A
Purification	Affinity-chromatography
Immunogen	A synthesized peptide derived from human Prostatic Acid Phosphatase
Description	A non-specific tyrosine phosphatase that dephosphorylates a diverse number of substrates under acidic conditions (pH 4-6) including alkyl, aryl, and acyl orthophosphate monoesters and phosphorylated proteins. Has lipid phosphatase activity and inactivates lysophosphatidic acid in seminal plasma.
Storage Condition and Buffer	Rabbit IgG in phosphate buffered saline , pH 7.4, 150mM NaCl, 0.02% sodium azide and 50% glycerol. Store at +4°C short term. Store at -20°C long term. Avoid freeze / thaw cycle.

Prostatic Acid Phosphatase Antibody - Protein Information**Name** ACP3 ([HGNC:125](#))**Synonyms** ACP3**Function**

A non-specific tyrosine phosphatase that dephosphorylates a diverse number of substrates under acidic conditions (pH 4-6) including alkyl, aryl, and acyl orthophosphate monoesters and phosphorylated proteins (PubMed:<a href="http://www.uniprot.org/citations/10506173"

target="_blank">10506173, PubMed:15280042, PubMed:20498373, PubMed:9584846). Has lipid phosphatase activity and inactivates lysophosphatidic acid in seminal plasma (PubMed:10506173, PubMed:15280042).

Cellular Location

[Isoform 1]: Secreted

Tissue Location

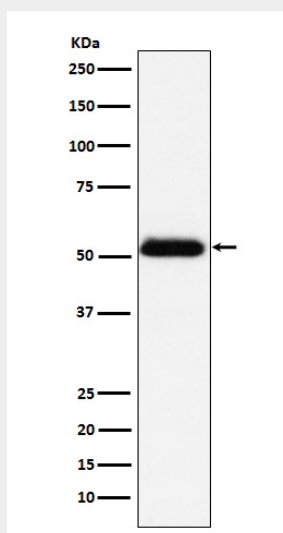
Highly expressed in the prostate, restricted to glandular and ductal epithelial cells. Also expressed in bladder, kidney, pancreas, lung, cervix, testis and ovary. Weak expression in a subset of pancreatic islet cells, squamous epithelia, the pilosebaceous unit, colonic neuroendocrine cells and skin adnexal structures. Low expression in prostate carcinoma cells and tissues

Prostatic Acid Phosphatase Antibody - Protocols

Provided below are standard protocols that you may find useful for product applications.

- [Western Blot](#)
- [Blocking Peptides](#)
- [Dot Blot](#)
- [Immunohistochemistry](#)
- [Immunofluorescence](#)
- [Immunoprecipitation](#)
- [Flow Cytometry](#)
- [Cell Culture](#)

Prostatic Acid Phosphatase Antibody - Images



Western blot analysis of Prostatic Acid Phosphatase expression in human prostate cancer lysate.