

**CD48 Antibody**  
**Rabbit mAb**  
**Catalog # AP91882****Specification****CD48 Antibody - Product Information**

Application	WB, IHC, ICC, IP
Primary Accession	<a href="#">P09326</a>
Clonality	Monoclonal
<b>Other Names</b>	
BCM1; BLAST; BLAST1; CD48; hCD48; mCD48; MEM102; SLAMF2;	
Isotype	Rabbit IgG
Host	Rabbit
Calculated MW	27683 Da

**CD48 Antibody - Additional Information**

Dilution	WB~~1:1000 IHC~~1:100~500 ICC~~N/A IP~~N/A
Purification	Affinity-chromatography
Immunogen	A synthesized peptide derived from human CD48
Description	Ligand for CD2. Might facilitate interaction between activated lymphocytes. Probably involved in regulating T-cell activation.
Storage Condition and Buffer	Rabbit IgG in phosphate buffered saline , pH 7.4, 150mM NaCl, 0.02% sodium azide and 50% glycerol. Store at +4°C short term. Store at -20°C long term. Avoid freeze / thaw cycle.

**CD48 Antibody - Protein Information****Name** CD48**Synonyms** BCM1, BLAST1**Function**

Glycosylphosphatidylinositol (GPI)-anchored cell surface glycoprotein that interacts via its N-terminal immunoglobulin domain with cell surface receptors including CD244/2B4 or CD2 to regulate immune cell function and activation (PubMed:<a href="http://www.uniprot.org/citations/12007789" target="\_blank">12007789</a>, PubMed:<a href="http://www.uniprot.org/citations/19494291" target="\_blank">19494291</a>, PubMed:<a href="http://www.uniprot.org/citations/27249817" target="\_blank">27249817</a>, PubMed:<a href="http://www.uniprot.org/citations/9841922" target="\_blank">9841922</a>). Participates in T-cell signaling transduction by associating with CD2 and efficiently bringing the Src family protein

kinase LCK and LAT to the TCR/CD3 complex (PubMed:<a href="http://www.uniprot.org/citations/19494291" target="\_blank">19494291</a>). In turn, promotes LCK phosphorylation and subsequent activation (PubMed:<a href="http://www.uniprot.org/citations/12007789" target="\_blank">12007789</a>). Induces the phosphorylation of the cytoplasmic immunoreceptor tyrosine switch motifs (ITSMs) of CD244 initiating a series of signaling events that leads to the generation of the immunological synapse and the directed release of cytolytic granules containing perforin and granzymes by T-lymphocytes and NK- cells (PubMed:<a href="http://www.uniprot.org/citations/27249817" target="\_blank">27249817</a>).

#### Cellular Location

Cell membrane; Lipid-anchor, GPI-anchor. Membrane raft. Secreted

#### Tissue Location

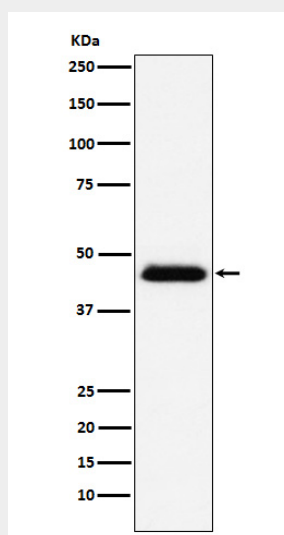
Widely expressed on all hematopoietic cells.

### CD48 Antibody - Protocols

Provided below are standard protocols that you may find useful for product applications.

- [Western Blot](#)
- [Blocking Peptides](#)
- [Dot Blot](#)
- [Immunohistochemistry](#)
- [Immunofluorescence](#)
- [Immunoprecipitation](#)
- [Flow Cytometry](#)
- [Cell Culture](#)

### CD48 Antibody - Images



Western blot analysis of CD48 expression in Raji cell lysate.