

Glycophorin C Antibody
Rabbit mAb
Catalog # AP91883**Specification**

Glycophorin C Antibody - Product Information

Application	WB, IHC, FC, ICC, IP
Primary Accession	P04921
Clonality	Monoclonal
Other Names	
GYPC; CD236; CD236R; GE; GPC; GYPD;	
Isotype	Rabbit IgG
Host	Rabbit
Calculated MW	13811 Da

Glycophorin C Antibody - Additional Information

Dilution	WB~~1:1000 IHC~~1:100~500 FC~~1:10~50 ICC~~N/A IP~~N/A
Purification	Affinity-chromatography
Immunogen	A synthesized peptide derived from human Glycophorin C
Description	This protein is a minor sialoglycoprotein in human erythrocyte membranes. The blood group Gerbich antigens and receptors for Plasmodium falciparum merozoites are most likely located within the extracellular domain.
Storage Condition and Buffer	Rabbit IgG in phosphate buffered saline , pH 7.4, 150mM NaCl, 0.02% sodium azide and 50% glycerol. Store at +4°C short term. Store at -20°C long term. Avoid freeze / thaw cycle.

Glycophorin C Antibody - Protein Information**Name** GYPC**Synonyms** GLPC, GPC**Function**

This protein is a minor sialoglycoprotein in human erythrocyte membranes. The blood group Gerbich antigens and receptors for Plasmodium falciparum merozoites are most likely located within the extracellular domain. Glycophorin-C plays an important role in regulating the stability of red cells.

Cellular Location

Cell membrane; Single-pass type III membrane protein. Note=Linked to the membrane via band 4.1

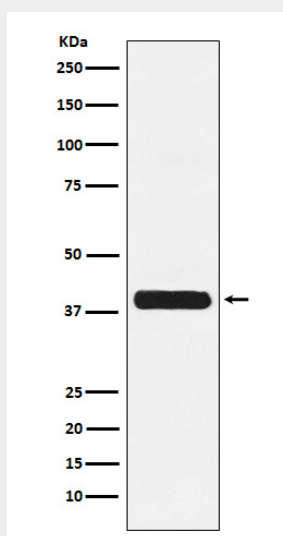
Tissue Location

Glycophorin-C is expressed in erythrocytes. Glycophorin-D and IsoGPC are ubiquitously expressed

Glycophorin C Antibody - Protocols

Provided below are standard protocols that you may find useful for product applications.

- [Western Blot](#)
- [Blocking Peptides](#)
- [Dot Blot](#)
- [Immunohistochemistry](#)
- [Immunofluorescence](#)
- [Immunoprecipitation](#)
- [Flow Cytometry](#)
- [Cell Culture](#)

Glycophorin C Antibody - Images

Western blot analysis of Glycophorin C expression in K562 cell lysate.