

**PICK1 Antibody**  
**Rabbit mAb**  
**Catalog # AP91884****Specification**

---

**PICK1 Antibody - Product Information**

Application	WB, FC, IP
Primary Accession	<a href="#">Q9NRD5</a>
Reactivity	Rat
Clonality	Monoclonal
<b>Other Names</b>	
PICK 1; Pick1; PRKCABP;	

Isotype	Rabbit IgG
Host	Rabbit
Calculated MW	46600 Da

**PICK1 Antibody - Additional Information**

Dilution	WB~~1:1000 FC~~1:10~50 IP~~N/A
Purification	Affinity-chromatography
Immunogen	A synthesized peptide derived from human PICK1
Description	Probable adapter protein that bind to and organize the subcellular localization of a variety of membrane proteins containing some PDZ recognition sequence. Involved in the clustering of various receptors, possibly by acting at the receptor internalization level. Plays a role in synaptic plasticity by regulating the trafficking and internalization of AMPA receptors.
Storage Condition and Buffer	Rabbit IgG in phosphate buffered saline , pH 7.4, 150mM NaCl, 0.02% sodium azide and 50% glycerol. Store at +4°C short term. Store at -20°C long term. Avoid freeze / thaw cycle.

**PICK1 Antibody - Protein Information****Name** PICK1**Synonyms** PRKCABP**Function**

Probable adapter protein that bind to and organize the subcellular localization of a variety of

membrane proteins containing some PDZ recognition sequence. Involved in the clustering of various receptors, possibly by acting at the receptor internalization level. Plays a role in synaptic plasticity by regulating the trafficking and internalization of AMPA receptors. May be regulated upon PRKCA activation. May regulate ASIC1/ASIC3 channel. Regulates actin polymerization by inhibiting the actin-nucleating activity of the Arp2/3 complex; the function is competitive with nucleation promoting factors and is linked to neuronal morphology regulation and AMPA receptor (AMPA) endocytosis. Via interaction with the Arp2/3 complex involved in regulation of synaptic plasticity of excitatory synapses and required for spine shrinkage during long-term depression (LTD). Involved in regulation of astrocyte morphology, antagonistic to Arp2/3 complex activator WASL/N-WASP function.

#### Cellular Location

Cytoplasm, perinuclear region {ECO:0000250|UniProtKB:Q9EP80}. Membrane {ECO:0000250|UniProtKB:Q9EP80}; Peripheral membrane protein {ECO:0000250|UniProtKB:Q9EP80}. Membrane {ECO:0000250|UniProtKB:Q62083}; Lipid-anchor {ECO:0000250|UniProtKB:Q62083}. Postsynaptic density {ECO:0000250|UniProtKB:Q9EP80}. Synapse, synaptosome {ECO:0000250|UniProtKB:Q9EP80}. Cytoplasm, cytoskeleton {ECO:0000250|UniProtKB:Q9EP80}. Note=Also membrane-associated, present at excitatory synapses. {ECO:0000250|UniProtKB:Q9EP80}

#### Tissue Location

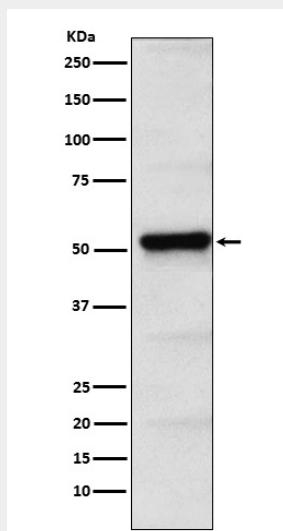
Ubiquitous.

#### PICK1 Antibody - Protocols

Provided below are standard protocols that you may find useful for product applications.

- [Western Blot](#)
- [Blocking Peptides](#)
- [Dot Blot](#)
- [Immunohistochemistry](#)
- [Immunofluorescence](#)
- [Immunoprecipitation](#)
- [Flow Cytometry](#)
- [Cell Culture](#)

#### PICK1 Antibody - Images



Western blot analysis of PICK1 expression in HeLa cell lysate.