

**Alcohol Dehydrogenase Antibody**  
**Rabbit mAb**  
**Catalog # AP91893****Specification**

---

**Alcohol Dehydrogenase Antibody - Product Information**

Application	WB, IHC, ICC
Primary Accession	<a href="#">P07327</a>
Reactivity	Rat
Clonality	Monoclonal
<b>Other Names</b>	
ADH; ADH1; ADH1A; Aldehyde reductase;	
Isotype	Rabbit IgG
Host	Rabbit
Calculated MW	39859 Da

**Alcohol Dehydrogenase Antibody - Additional Information**

Dilution	WB~~1:1000 IHC~~1:100~500 ICC~~N/A
Purification	Affinity-chromatography
Immunogen	A synthesized peptide derived from human Alcohol Dehydrogenase
Description	Belongs to the zinc-containing alcohol dehydrogenase family.
Storage Condition and Buffer	Rabbit IgG in phosphate buffered saline , pH 7.4, 150mM NaCl, 0.02% sodium azide and 50% glycerol. Store at +4°C short term. Store at -20°C long term. Avoid freeze / thaw cycle.

**Alcohol Dehydrogenase Antibody - Protein Information****Name** ADH1A**Synonyms** ADH1**Function**

Alcohol dehydrogenase (PubMed:<a href="http://www.uniprot.org/citations/2738060" target="\_blank">2738060</a>). Oxidizes primary as well as secondary alcohols. Ethanol is a very poor substrate (PubMed:<a href="http://www.uniprot.org/citations/2738060" target="\_blank">2738060</a>).

**Cellular Location**

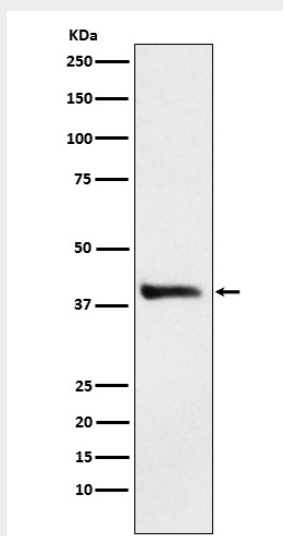
Cytoplasm.

## Alcohol Dehydrogenase Antibody - Protocols

Provided below are standard protocols that you may find useful for product applications.

- [Western Blot](#)
- [Blocking Peptides](#)
- [Dot Blot](#)
- [Immunohistochemistry](#)
- [Immunofluorescence](#)
- [Immunoprecipitation](#)
- [Flow Cytometry](#)
- [Cell Culture](#)

## Alcohol Dehydrogenase Antibody - Images



Western blot analysis of Alcohol Dehydrogenase expression in HepG2 cell lysate.