

**HSP10 Antibody**  
**Rabbit mAb**  
**Catalog # AP91896****Specification**

---

**HSP10 Antibody - Product Information**

Application	WB, IHC, ICC, IP
Primary Accession	<a href="#">P61604</a>
Reactivity	Rat
Clonality	Monoclonal

**Other Names**

Chaperonin 10; CPN10; EPF; GROES; Hsp10; Hspe1;

Isotype	Rabbit IgG
Host	Rabbit
Calculated MW	10932 Da

**HSP10 Antibody - Additional Information**

Dilution	WB~~1:1000 IHC~~1:100~500 ICC~~N/A IP~~N/A
Purification	Affinity-chromatography
Immunogen	A synthesized peptide derived from human HSP10
Description	Eukaryotic HSP10 homolog which is essential for mitochondrial protein biogenesis, together with CPN60. Binds to CPN60 in the presence of Mg-ATP and suppresses the ATPase activity of the latter.
Storage Condition and Buffer	Rabbit IgG in phosphate buffered saline , pH 7.4, 150mM NaCl, 0.02% sodium azide and 50% glycerol. Store at +4°C short term. Store at -20°C long term. Avoid freeze / thaw cycle.

**HSP10 Antibody - Protein Information****Name** HSPE1**Function**

Co-chaperonin implicated in mitochondrial protein import and macromolecular assembly. Together with Hsp60, facilitates the correct folding of imported proteins. May also prevent misfolding and promote the refolding and proper assembly of unfolded polypeptides generated under stress conditions in the mitochondrial matrix (PubMed:<a href="http://www.uniprot.org/citations/11422376" target="\_blank">11422376</a>, PubMed:<a href="http://www.uniprot.org/citations/1346131" target="\_blank">1346131</a>, PubMed:<a href="http://www.uniprot.org/citations/1346131" target="\_blank">1346131</a>)

[7912672](http://www.uniprot.org/citations/7912672)). The functional units of these chaperonins consist of heptameric rings of the large subunit Hsp60, which function as a back-to-back double ring. In a cyclic reaction, Hsp60 ring complexes bind one unfolded substrate protein per ring, followed by the binding of ATP and association with 2 heptameric rings of the co-chaperonin Hsp10. This leads to sequestration of the substrate protein in the inner cavity of Hsp60 where, for a certain period of time, it can fold undisturbed by other cell components. Synchronous hydrolysis of ATP in all Hsp60 subunits results in the dissociation of the chaperonin rings and the release of ADP and the folded substrate protein (Probable).

#### Cellular Location

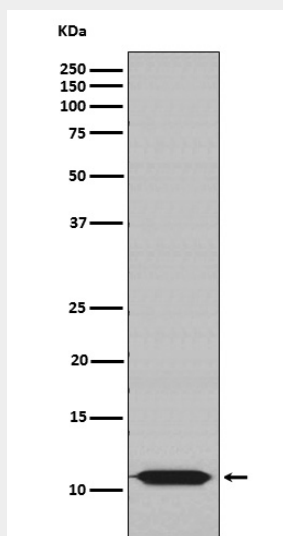
Mitochondrion matrix.

### HSP10 Antibody - Protocols

Provided below are standard protocols that you may find useful for product applications.

- [Western Blot](#)
- [Blocking Peptides](#)
- [Dot Blot](#)
- [Immunohistochemistry](#)
- [Immunofluorescence](#)
- [Immunoprecipitation](#)
- [Flow Cytometry](#)
- [Cell Culture](#)

### HSP10 Antibody - Images



Western blot analysis of HSP10 expression in A431 cell lysate.