

**Tropomyosin 1 Antibody**  
**Rabbit mAb**  
**Catalog # AP91910****Specification**

---

**Tropomyosin 1 Antibody - Product Information**

Application	WB, IHC, FC, ICC, IP
Primary Accession	<a href="#">P09493</a>
Reactivity	Rat
Clonality	Monoclonal
<b>Other Names</b>	
CMH3; TMSA; CMD1Y; C15orf13; HTM-alpha;	
Isotype	Rabbit IgG
Host	Rabbit
Calculated MW	32709 Da

**Tropomyosin 1 Antibody - Additional Information**

Dilution	WB~~1:1000 IHC~~1:100~500 FC~~1:10~50 ICC~~N/A IP~~N/A
Purification	Affinity-chromatography
Immunogen	A synthesized peptide derived from human Tropomyosin 1
Description	Binds to actin filaments in muscle and non-muscle cells. Plays a central role, in association with the troponin complex, in the calcium dependent regulation of vertebrate striated muscle contraction.
Storage Condition and Buffer	Rabbit IgG in phosphate buffered saline , pH 7.4, 150mM NaCl, 0.02% sodium azide and 50% glycerol. Store at +4°C short term. Store at -20°C long term. Avoid freeze / thaw cycle.

**Tropomyosin 1 Antibody - Protein Information****Name** TPM1**Synonyms** C15orf13, TMSA**Function**

Binds to actin filaments in muscle and non-muscle cells (PubMed:<a href="http://www.uniprot.org/citations/23170982" target="\_blank">23170982</a>). Plays a central role, in association with the troponin complex, in the calcium dependent regulation of vertebrate striated muscle contraction (PubMed:<a

<http://www.uniprot.org/citations/23170982>). Smooth muscle contraction is regulated by interaction with caldesmon. In non-muscle cells is implicated in stabilizing cytoskeleton actin filaments.

#### Cellular Location

Cytoplasm, cytoskeleton {ECO:0000250|UniProtKB:P04692}. Note=Associates with F-actin stress fibers. {ECO:0000250|UniProtKB:P04692}

#### Tissue Location

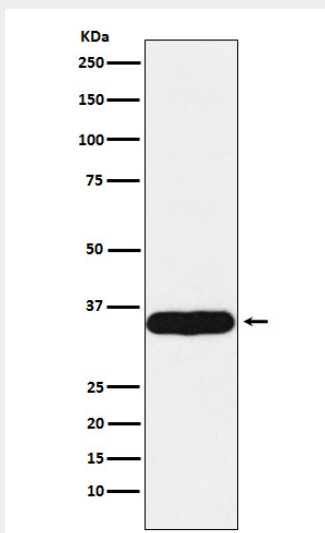
Detected in primary breast cancer tissues but undetectable in normal breast tissues in Sudanese patients. Isoform 1 is expressed in adult and fetal skeletal muscle and cardiac tissues, with higher expression levels in the cardiac tissues. Isoform 10 is expressed in adult and fetal cardiac tissues, but not in skeletal muscle. {ECO:0000269|PubMed:15249230, ECO:0000269|Ref.15}

### Tropomyosin 1 Antibody - Protocols

Provided below are standard protocols that you may find useful for product applications.

- [Western Blot](#)
- [Blocking Peptides](#)
- [Dot Blot](#)
- [Immunohistochemistry](#)
- [Immunofluorescence](#)
- [Immunoprecipitation](#)
- [Flow Cytometry](#)
- [Cell Culture](#)

### Tropomyosin 1 Antibody - Images



Western blot analysis of Tropomyosin 1 expression in Human heart lysate.