

LY75 Antibody
Rabbit mAb
Catalog # AP91915**Specification**

LY75 Antibody - Product Information

Application	WB, IHC, ICC, IP
Primary Accession	O60449
Clonality	Monoclonal
Other Names	
CD205; CLEC13B; DEC-205; gp200-MR6; Ly-75; LY75;	

Isotype	Rabbit IgG
Host	Rabbit
Calculated MW	198311 Da

LY75 Antibody - Additional Information

Dilution	WB~~1:1000 IHC~~1:100~500 ICC~~N/A IP~~N/A
Purification	Affinity-chromatography
Immunogen	A synthesized peptide derived from human LY75
Description	Acts as an endocytic receptor to direct captured antigens from the extracellular space to a specialized antigen-processing compartment (By similarity). Causes reduced proliferation of B-lymphocytes.
Storage Condition and Buffer	Rabbit IgG in phosphate buffered saline , pH 7.4, 150mM NaCl, 0.02% sodium azide and 50% glycerol. Store at +4°C short term. Store at -20°C long term. Avoid freeze / thaw cycle.

LY75 Antibody - Protein Information**Name** LY75**Synonyms** CD205, CLEC13B**Function**

Acts as an endocytic receptor to direct captured antigens from the extracellular space to a specialized antigen-processing compartment (By similarity). Causes reduced proliferation of B-lymphocytes.

Cellular Location

Membrane; Single-pass type I membrane protein

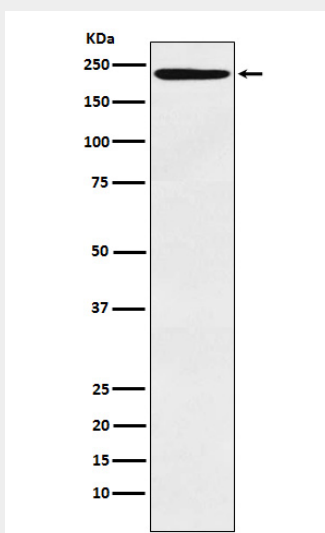
Tissue Location

Expressed in spleen, thymus, colon and peripheral blood lymphocytes. Detected in myeloid and B-lymphoid cell lines Isoform 2 and isoform 3 are expressed in malignant Hodgkin lymphoma cells called Hodgkin and Reed-Sternberg (HRS) cells

LY75 Antibody - Protocols

Provided below are standard protocols that you may find useful for product applications.

- [Western Blot](#)
- [Blocking Peptides](#)
- [Dot Blot](#)
- [Immunohistochemistry](#)
- [Immunofluorescence](#)
- [Immunoprecipitation](#)
- [Flow Cytometry](#)
- [Cell Culture](#)

LY75 Antibody - Images

Western blot analysis of LY75 expression in Human tonsil lysate.