

p150 CAF1 Antibody
Rabbit mAb
Catalog # AP91925**Specification**

p150 CAF1 Antibody - Product Information

Application	WB, IHC, FC, ICC, IP
Primary Accession	Q13111
Clonality	Monoclonal
Other Names	
CAF; CAF1; CAF1P150; CHAF1A; DCAF1; hp15; P150;	

Isotype	Rabbit IgG
Host	Rabbit
Calculated MW	106910 Da

p150 CAF1 Antibody - Additional Information

Dilution	WB~~1:1000 IHC~~1:100~500 FC~~1:10~50 ICC~~N/A IP~~N/A
Purification	Affinity-chromatography
Immunogen	A synthesized peptide derived from human p150 CAF1
Description	Core component of the CAF-1 complex, a complex thought to mediate chromatin assembly in DNA replication and DNA repair. Assembles histone octamers onto replicating DNA in vitro. CAF-1 performs the first step of the nucleosome assembly process, bringing newly synthesized histones H3 and H4 to replicating DNA; histones H2A/H2B can bind to this chromatin precursor subsequent to DNA replication to complete the histone octamer.
Storage Condition and Buffer	Rabbit IgG in phosphate buffered saline , pH 7.4, 150mM NaCl, 0.02% sodium azide and 50% glycerol. Store at +4°C short term. Store at -20°C long term. Avoid freeze / thaw cycle.

p150 CAF1 Antibody - Protein Information**Name** CHAF1A ([HGNC:1910](#))**Synonyms** CAF, CAF1P150

Function

Acts as a component of the histone chaperone complex chromatin assembly factor 1 (CAF-1), which assembles histone octamers onto DNA during replication and repair. CAF-1 performs the first step of the nucleosome assembly process, bringing newly synthesized histones H3 and H4 to replicating DNA; histones H2A/H2B can bind to this chromatin precursor subsequent to DNA replication to complete the histone octamer. It may play a role in heterochromatin maintenance in proliferating cells by bringing newly synthesized cbx proteins to heterochromatic DNA replication foci.

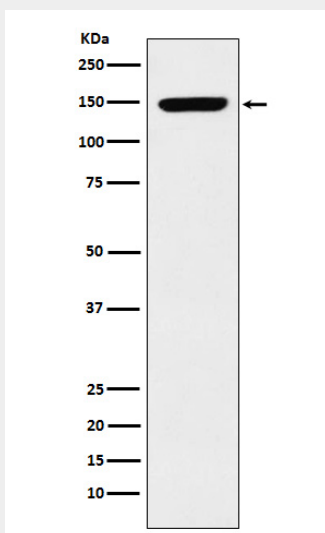
Cellular Location

Nucleus. Note=DNA replication foci

p150 CAF1 Antibody - Protocols

Provided below are standard protocols that you may find useful for product applications.

- [Western Blot](#)
- [Blocking Peptides](#)
- [Dot Blot](#)
- [Immunohistochemistry](#)
- [Immunofluorescence](#)
- [Immunoprecipitation](#)
- [Flow Cytometry](#)
- [Cell Culture](#)

p150 CAF1 Antibody - Images

Western blot analysis of p150 CAF1 expression in K562 cell lysate.