

**ORP150 Antibody**  
**Rabbit mAb**  
**Catalog # AP91929****Specification**

---

**ORP150 Antibody - Product Information**

Application	WB, IHC, FC
Primary Accession	<a href="#">O9Y4L1</a>
Reactivity	Rat
Clonality	Monoclonal
<b>Other Names</b>	
Grp170; HSP12A; Hyou1; Orp150;	
Isotype	Rabbit IgG
Host	Rabbit
Calculated MW	111335 Da

**ORP150 Antibody - Additional Information**

Dilution	WB~~1:1000 IHC~~1:100~500 FC~~1:10~50
Purification	Affinity-chromatography
Immunogen	A synthesized peptide derived from human ORP150
Description	Has a pivotal role in cytoprotective cellular mechanisms triggered by oxygen deprivation. May play a role as a molecular chaperone and participate in protein folding.
Storage Condition and Buffer	Rabbit IgG in phosphate buffered saline , pH 7.4, 150mM NaCl, 0.02% sodium azide and 50% glycerol. Store at +4°C short term. Store at -20°C long term. Avoid freeze / thaw cycle.

**ORP150 Antibody - Protein Information****Name** HYOU1**Synonyms** GRP170, HSPH4 {ECO:0000303|PubMed:186636}**Function**

Has a pivotal role in cytoprotective cellular mechanisms triggered by oxygen deprivation. Promotes HSPA5/BiP-mediated ATP nucleotide exchange and thereby activates the unfolded protein response (UPR) pathway in the presence of endoplasmic reticulum stress (By similarity). May play a role as a molecular chaperone and participate in protein folding.

**Cellular Location**

Endoplasmic reticulum lumen.

#### **Tissue Location**

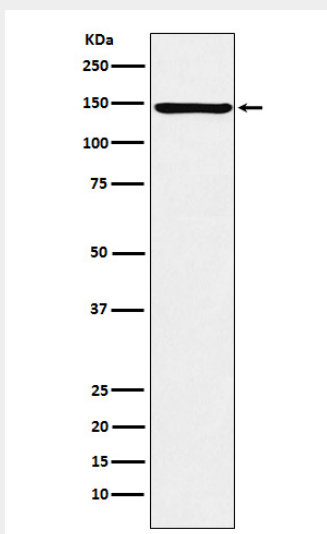
Highly expressed in tissues that contain well- developed endoplasmic reticulum and synthesize large amounts of secretory proteins. Highly expressed in liver and pancreas and lower expression in brain and kidney. Also expressed in macrophages within aortic atherosclerotic plaques, and in breast cancers

#### **ORP150 Antibody - Protocols**

Provided below are standard protocols that you may find useful for product applications.

- [Western Blot](#)
- [Blocking Peptides](#)
- [Dot Blot](#)
- [Immunohistochemistry](#)
- [Immunofluorescence](#)
- [Immunoprecipitation](#)
- [Flow Cytometry](#)
- [Cell Culture](#)

#### **ORP150 Antibody - Images**



Western blot analysis of ORP150 expression in MCF7 cell lysate.