

TIM1 Antibody
Rabbit mAb
Catalog # AP91939

Specification

TIM1 Antibody - Product Information

Application	WB
Primary Accession	Q96D42
Reactivity	Rat
Clonality	Monoclonal
Other Names	
CD365; HAVCR 1; HAVCR; Havcr1; KIM 1; TIM; TIM1; TIMD1;	
Isotype	Rabbit IgG
Host	Rabbit
Calculated MW	39250 Da

TIM1 Antibody - Additional Information

Dilution	WB~~1:1000
Purification	Affinity-chromatography
Immunogen	A synthesized peptide derived from human TIM 1
Description	May play a role in T-helper cell development and the regulation of asthma and allergic diseases. Receptor for TIMD4 (By similarity). In case of human hepatitis A virus (HHAV) infection, functions as a cell-surface receptor for the virus. May play a role in kidney injury and repair.
Storage Condition and Buffer	Rabbit IgG in phosphate buffered saline , pH 7.4, 150mM NaCl, 0.02% sodium azide and 50% glycerol. Store at +4°C short term. Store at -20°C long term. Avoid freeze / thaw cycle.

TIM1 Antibody - Protein Information

Name HAVCR1

Synonyms KIM1, TIM1, TIMD1

Function

Phosphatidylserine receptor that plays an important functional role in regulatory B-cells homeostasis including generation, expansion and suppressor functions (By similarity). As P-selectin/SELPLG ligand, plays a specialized role in activated but not naive T-cell trafficking during inflammatory responses (PubMed:24703780). Controls thereby T-cell accumulation in the inflamed central nervous system (CNS) and the induction of autoimmune disease (PubMed:<a

<http://www.uniprot.org/citations/24703780> target="_blank">24703780). Also regulates expression of various anti-inflammatory cytokines and co-inhibitory ligands including IL10 (By similarity). Acts as a regulator of T-cell proliferation (By similarity). May play a role in kidney injury and repair (PubMed:17471468).

Cellular Location

Cell membrane; Single-pass type I membrane protein

Tissue Location

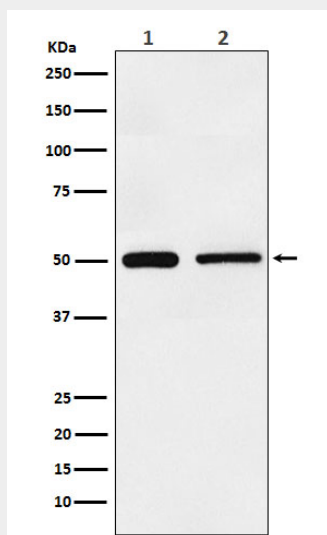
Widely expressed, with highest levels in kidney and testis. Expressed by activated CD4+ T-cells during the development of helper T-cells responses.

TIM1 Antibody - Protocols

Provided below are standard protocols that you may find useful for product applications.

- [Western Blot](#)
- [Blocking Peptides](#)
- [Dot Blot](#)
- [Immunohistochemistry](#)
- [Immunofluorescence](#)
- [Immunoprecipitation](#)
- [Flow Cytometry](#)
- [Cell Culture](#)

TIM1 Antibody - Images



Western blot analysis of TIM 1 expression in (1) HeLa cell lysate; (2) NIH/3T3 cell lysate.