

ATOH1 Antibody
Rabbit mAb
Catalog # AP91940**Specification**

ATOH1 Antibody - Product Information

Application	WB
Primary Accession	Q92858
Reactivity	Rat
Clonality	Monoclonal
Other Names	
ATH1; ATOH1; bHLHa14; hATH1; MATH1;	
Isotype	Rabbit IgG
Host	Rabbit
Calculated MW	38160 Da

ATOH1 Antibody - Additional Information

Dilution	WB~~1:1000
Purification	Affinity-chromatography
Immunogen	A synthesized peptide derived from human MATH1/HATH1
Description	Activates E box-dependent transcription in collaboration with TCF3/E47, but the activity is completely antagonized by the negative regulator of neurogenesis HES1. May play a role in the differentiation of subsets of neural cells by activating E box-dependent transcription.
Storage Condition and Buffer	Rabbit IgG in phosphate buffered saline , pH 7.4, 150mM NaCl, 0.02% sodium azide and 50% glycerol. Store at +4°C short term. Store at -20°C long term. Avoid freeze / thaw cycle.

ATOH1 Antibody - Protein Information**Name** ATOH1 ([HGNC:797](#))**Synonyms** ATH1, BHLHA14**Function**

Transcriptional regulator. Activates E box-dependent transcription in collaboration with TCF3/E47, but the activity is completely antagonized by the negative regulator of neurogenesis HES1. Plays a role in the differentiation of subsets of neural cells by activating E box-dependent transcription (By similarity).

Cellular Location

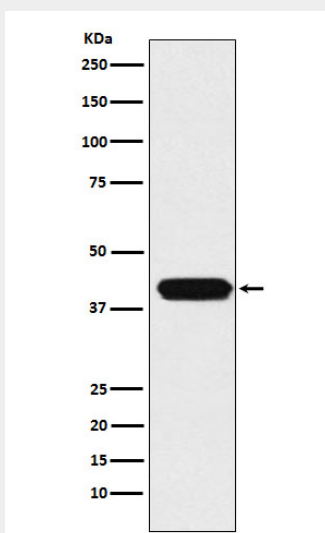
Nucleus.

ATOH1 Antibody - Protocols

Provided below are standard protocols that you may find useful for product applications.

- [Western Blot](#)
- [Blocking Peptides](#)
- [Dot Blot](#)
- [Immunohistochemistry](#)
- [Immunofluorescence](#)
- [Immunoprecipitation](#)
- [Flow Cytometry](#)
- [Cell Culture](#)

ATOH1 Antibody - Images



Western blot analysis of MATH1/HATH1 expression in HepG2 cell lysate.