

CD2 Antibody
Rabbit mAb
Catalog # AP91941**Specification**

CD2 Antibody - Product Information

Application	WB, IHC, FC, ICC, IP
Primary Accession	P06729
Clonality	Monoclonal
Other Names	
CD2; LFA2; LFA3 receptor; Ly-37; SRBC; T11;	
Isotype	Rabbit IgG
Host	Rabbit
Calculated MW	39448 Da

CD2 Antibody - Additional Information

Dilution	WB~~1:1000 IHC~~1:100~500 FC~~1:10~50 ICC~~N/A IP~~N/A
Purification	Affinity-chromatography
Immunogen	A synthesized peptide derived from human CD2
Description	CD2 interacts with lymphocyte function-associated antigen (LFA-3) and CD48/BCM1 to mediate adhesion between T-cells and other cell types. CD2 is implicated in the triggering of T-cells, the cytoplasmic domain is implicated in the signaling function.
Storage Condition and Buffer	Rabbit IgG in phosphate buffered saline , pH 7.4, 150mM NaCl, 0.02% sodium azide and 50% glycerol. Store at +4°C short term. Store at -20°C long term. Avoid freeze / thaw cycle.

CD2 Antibody - Protein Information**Name** CD2**Synonyms** SRBC**Function**

CD2 interacts with lymphocyte function-associated antigen CD58 (LFA-3) and CD48/BCM1 to mediate adhesion between T-cells and other cell types. CD2 is implicated in the triggering of T-cells, the cytoplasmic domain is implicated in the signaling function.

Cellular Location

Cell membrane; Single-pass type I membrane protein

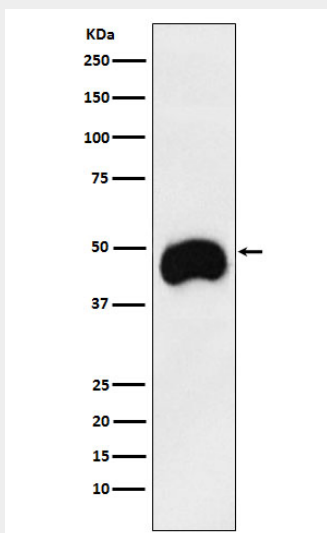
Tissue Location

Expressed in natural killer cells (at protein level).

CD2 Antibody - Protocols

Provided below are standard protocols that you may find useful for product applications.

- [Western Blot](#)
- [Blocking Peptides](#)
- [Dot Blot](#)
- [Immunohistochemistry](#)
- [Immunofluorescence](#)
- [Immunoprecipitation](#)
- [Flow Cytometry](#)
- [Cell Culture](#)

CD2 Antibody - Images

Western blot analysis of CD2 expression in Jurkat cell lysate.