

COMT Antibody
Rabbit mAb
Catalog # AP91943

Specification

COMT Antibody - Product Information

Application	WB, IHC
Primary Accession	P21964
Reactivity	Rat
Clonality	Monoclonal
Other Names	
Catechol O methyltransferase; COMT;	
Isotype	Rabbit IgG
Host	Rabbit
Calculated MW	30037 Da

COMT Antibody - Additional Information

Dilution	WB~~1:1000 IHC~~1:100~500
Purification	Affinity-chromatography
Immunogen	A synthesized peptide derived from human COMT
Description	Catalyzes the O-methylation, and thereby the inactivation, of catecholamine neurotransmitters and catechol hormones. Also shortens the biological half-lives of certain neuroactive drugs, like L-DOPA, alpha-methyl DOPA and isoproterenol.
Storage Condition and Buffer	Rabbit IgG in phosphate buffered saline , pH 7.4, 150mM NaCl, 0.02% sodium azide and 50% glycerol. Store at +4°C short term. Store at -20°C long term. Avoid freeze / thaw cycle.

COMT Antibody - Protein Information

Name COMT ([HGNC:2228](#))

Function

Catalyzes the O-methylation, and thereby the inactivation, of catecholamine neurotransmitters and catechol hormones. Also shortens the biological half-lives of certain neuroactive drugs, like L-DOPA, alpha-methyl DOPA and isoproterenol.

Cellular Location

[Isoform Soluble]: Cytoplasm

Tissue Location

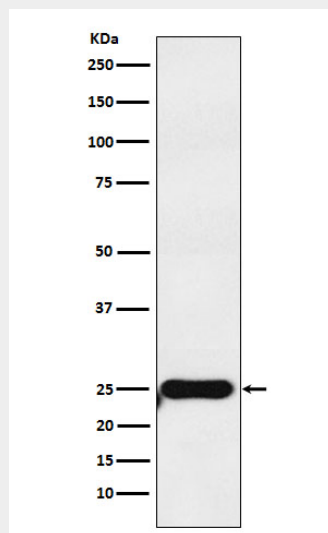
Brain, liver, placenta, lymphocytes and erythrocytes

COMT Antibody - Protocols

Provided below are standard protocols that you may find useful for product applications.

- [Western Blot](#)
- [Blocking Peptides](#)
- [Dot Blot](#)
- [Immunohistochemistry](#)
- [Immunofluorescence](#)
- [Immunoprecipitation](#)
- [Flow Cytometry](#)
- [Cell Culture](#)

COMT Antibody - Images



Western blot analysis of COMT expression in MOLT4 cell lysate.