

CD35 Antibody
Rabbit mAb
Catalog # AP91949

Specification

CD35 Antibody - Product Information

Application	WB, IHC, ICC
Primary Accession	P17927
Clonality	Monoclonal
Other Names	
C3 binding protein; C3b/C4b receptor; C3BR; C4BR; CD35; CR1; KN;	

Isotype	Rabbit IgG
Host	Rabbit
Calculated MW	223663 Da

CD35 Antibody - Additional Information

Dilution	WB~~1:1000 IHC~~1:100~500 ICC~~N/A
Purification	Affinity-chromatography
Immunogen	A synthesized peptide derived from human CD35
Description	Mediates cellular binding of particles and immune complexes that have activated complement.
Storage Condition and Buffer	Rabbit IgG in phosphate buffered saline , pH 7.4, 150mM NaCl, 0.02% sodium azide and 50% glycerol. Store at +4°C short term. Store at -20°C long term. Avoid freeze / thaw cycle.

CD35 Antibody - Protein Information

Name CR1

Synonyms C3BR

Function

Membrane immune adherence receptor that plays a critical role in the capture and clearance of complement-opsonized pathogens by erythrocytes and monocytes/macrophages (PubMed:2963069). Mediates the binding by these cells of particles and immune complexes that have activated complement to eliminate them from the circulation (PubMed:2963069). Also acts in the inhibition of spontaneous complement activation by impairing the formation and function of the alternative and classical pathway C3/C5 convertases, and by serving as a cofactor for the cleavage by factor I of C3b to iC3b, C3c and C3d,g, and of C4b to C4c and C4d (PubMed:2972794).

target="_blank">2972794, PubMed:8175757). Also plays a role in immune regulation by contributing, upon ligand binding, to the generation of regulatory T cells from activated helper T cells (PubMed:25742728).

Cellular Location

Membrane; Single- pass type I membrane protein

Tissue Location

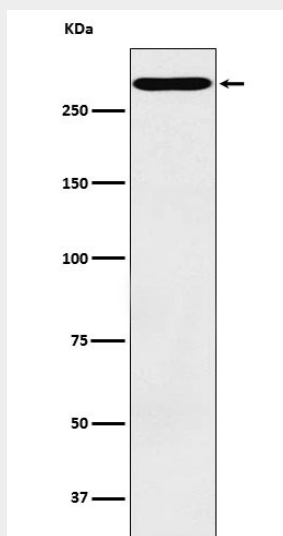
Present on erythrocytes, a subset of T cells, mature B cells, follicular dendritic cells, monocytes and granulocytes

CD35 Antibody - Protocols

Provided below are standard protocols that you may find useful for product applications.

- [Western Blot](#)
- [Blocking Peptides](#)
- [Dot Blot](#)
- [Immunohistochemistry](#)
- [Immunofluorescence](#)
- [Immunoprecipitation](#)
- [Flow Cytometry](#)
- [Cell Culture](#)

CD35 Antibody - Images



Western blot analysis of CD35 expression in TF1 cell lysate.