

**FKBP52 Antibody**  
**Rabbit mAb**  
**Catalog # AP91951****Specification**

---

**FKBP52 Antibody - Product Information**

Application	WB, IHC, FC, ICC
Primary Accession	<a href="#">Q02790</a>
Reactivity	Rat
Clonality	Monoclonal

**Other Names**

HBI; p52; Hsp56; FKBP51; FKBP52; FKBP59; PPlase;

Isotype	Rabbit IgG
Host	Rabbit
Calculated MW	51805 Da

**FKBP52 Antibody - Additional Information**

Dilution	WB~~1:1000 IHC~~1:100~500 FC~~1:10~50 ICC~~N/A
Purification	Affinity-chromatography
Immunogen	A synthesized peptide derived from human FKBP52
Description	Immunophilin protein with PPlase and co-chaperone activities (By similarity). Component of unliganded steroid receptors heterocomplexes through interaction with heat-shock protein 90 (HSP90).
Storage Condition and Buffer	Rabbit IgG in phosphate buffered saline , pH 7.4, 150mM NaCl, 0.02% sodium azide and 50% glycerol. Store at +4°C short term. Store at -20°C long term. Avoid freeze / thaw cycle.

**FKBP52 Antibody - Protein Information****Name** FKBP4**Synonyms** FKBP52**Function**

Immunophilin protein with PPlase and co-chaperone activities. Component of steroid receptors heterocomplexes through interaction with heat-shock protein 90 (HSP90). May play a role in the intracellular trafficking of heterooligomeric forms of steroid hormone receptors between cytoplasm and nuclear compartments. The isomerase activity controls neuronal growth cones via regulation

of TRPC1 channel opening. Also acts as a regulator of microtubule dynamics by inhibiting MAPT/TAU ability to promote microtubule assembly. May have a protective role against oxidative stress in mitochondria.

#### Cellular Location

Cytoplasm, cytosol. Mitochondrion. Nucleus {ECO:0000250|UniProtKB:P30416}. Cytoplasm, cytoskeleton {ECO:0000250|UniProtKB:Q9QVC8}. Cell projection, axon {ECO:0000250|UniProtKB:Q9QVC8}. Note=Shuttles from mitochondria to nucleus; co-localizes in mitochondria with the glucocorticoid receptor (PubMed:21730050). Colocalized with MAPT/TAU in the distal part of the primary cortical neurons (By similarity) {ECO:0000250|UniProtKB:Q9QVC8, ECO:0000269|PubMed:21730050}

#### Tissue Location

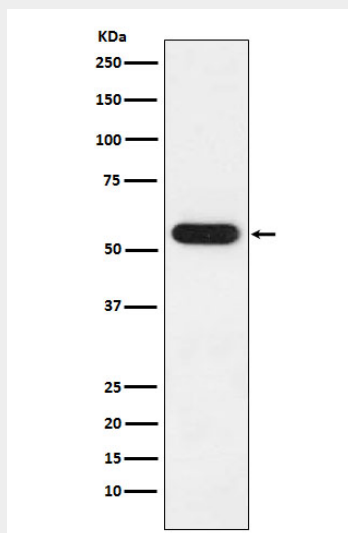
Widely expressed..

### FKBP52 Antibody - Protocols

Provided below are standard protocols that you may find useful for product applications.

- [Western Blot](#)
- [Blocking Peptides](#)
- [Dot Blot](#)
- [Immunohistochemistry](#)
- [Immunofluorescence](#)
- [Immunoprecipitation](#)
- [Flow Cytometry](#)
- [Cell Culture](#)

### FKBP52 Antibody - Images



Western blot analysis of FKBP52 expression in MCF7 cell lysate.