

**MCM3 Antibody**  
**Rabbit mAb**  
**Catalog # AP91967****Specification**

---

**MCM3 Antibody - Product Information**

Application	WB, IHC, FC, ICC
Primary Accession	<a href="#">P25205</a>
Reactivity	Rat
Clonality	Monoclonal
<b>Other Names</b>	
MCM3; HCC5; P1-MCM3; P1.h; RLFB;	

Isotype	Rabbit IgG
Host	Rabbit
Calculated MW	90981 Da

**MCM3 Antibody - Additional Information**

Dilution	WB~~1:1000 IHC~~1:100~500 FC~~1:10~50 ICC~~N/A
Purification	Affinity-chromatography
Immunogen	A synthesized peptide derived from human MCM3
Description	Acts as component of the MCM2-7 complex (MCM complex) which is the putative replicative helicase essential for 'once per cell cycle' DNA replication initiation and elongation in eukaryotic cells.
Storage Condition and Buffer	Rabbit IgG in phosphate buffered saline , pH 7.4, 150mM NaCl, 0.02% sodium azide and 50% glycerol. Store at +4°C short term. Store at -20°C long term. Avoid freeze / thaw cycle.

**MCM3 Antibody - Protein Information****Name** MCM3 ([HGNC:6945](#))**Function**

Acts as a component of the MCM2-7 complex (MCM complex) which is the replicative helicase essential for 'once per cell cycle' DNA replication initiation and elongation in eukaryotic cells. Core component of CDC45-MCM-GINS (CMG) helicase, the molecular machine that unwinds template DNA during replication, and around which the replisome is built (PubMed:<a href="http://www.uniprot.org/citations/32453425" target="\_blank">32453425</a>, PubMed:<a href="http://www.uniprot.org/citations/34694004" target="\_blank">34694004</a>, PubMed:<a href="http://www.uniprot.org/citations/34700328" target="\_blank">34700328</a>, PubMed:<a href="http://www.uniprot.org/citations/34700328" target="\_blank">34700328</a>).

[35585232](http://www.uniprot.org/citations/35585232)). The active ATPase sites in the MCM2-7 ring are formed through the interaction surfaces of two neighboring subunits such that a critical structure of a conserved arginine finger motif is provided in trans relative to the ATP-binding site of the Walker A box of the adjacent subunit. The six ATPase active sites, however, are likely to contribute differentially to the complex helicase activity (PubMed:[32453425](http://www.uniprot.org/citations/32453425)). Required for the entry in S phase and for cell division (Probable).

#### Cellular Location

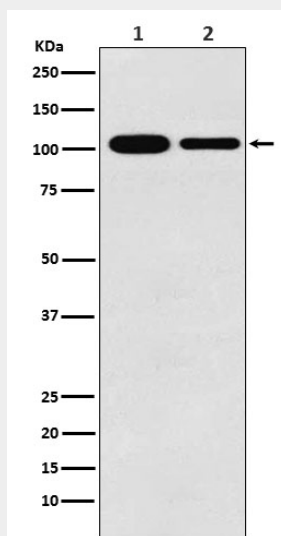
Nucleus. Chromosome. Note=Associated with chromatin before the formation of nuclei and detaches from it as DNA replication progresses.

#### MCM3 Antibody - Protocols

Provided below are standard protocols that you may find useful for product applications.

- [Western Blot](#)
- [Blocking Peptides](#)
- [Dot Blot](#)
- [Immunohistochemistry](#)
- [Immunofluorescence](#)
- [Immunoprecipitation](#)
- [Flow Cytometry](#)
- [Cell Culture](#)

#### MCM3 Antibody - Images



Western blot analysis of MCM3 expression in (1) K562 cell lysate; (2) RAW264.7 cell lysate.