

Loricrin Antibody
Rabbit mAb
Catalog # AP91970

Specification

Loricrin Antibody - Product Information

Application	WB, IHC
Primary Accession	P23490
Clonality	Monoclonal
Other Names	
LOR; Loricrin; LRN;	
Isotype	Rabbit IgG
Host	Rabbit
Calculated MW	25761 Da

Loricrin Antibody - Additional Information

Dilution	WB~~1:1000 IHC~~1:100~500
Purification	Affinity-chromatography
Immunogen	A synthesized peptide derived from human Loricrin
Description	Major keratinocyte cell envelope protein.
Storage Condition and Buffer	Rabbit IgG in phosphate buffered saline , pH 7.4, 150mM NaCl, 0.02% sodium azide and 50% glycerol. Store at +4°C short term. Store at -20°C long term. Avoid freeze / thaw cycle.

Loricrin Antibody - Protein Information

Name LORICRIN ([HGNC:6663](#))

Synonyms LOR, LRN

Function
Major keratinocyte cell envelope protein.

Cellular Location
Cytoplasm. Nucleus, nucleoplasm.

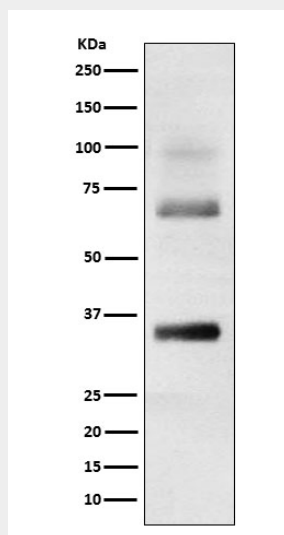
Loricrin Antibody - Protocols

Provided below are standard protocols that you may find useful for product applications.

- [Western Blot](#)

- [Blocking Peptides](#)
- [Dot Blot](#)
- [Immunohistochemistry](#)
- [Immunofluorescence](#)
- [Immunoprecipitation](#)
- [Flow Cytometry](#)
- [Cell Culture](#)

Loricrin Antibody - Images



Western blot analysis of Loricrin expression in Human skin cell lysate.