

Frizzled 8 Antibody
Rabbit mAb
Catalog # AP91974**Specification**

Frizzled 8 Antibody - Product Information

Application	WB, IHC
Primary Accession	O9H461
Reactivity	Rat
Clonality	Monoclonal
Other Names	
Frizzled-8; FZ8; FZD8; hFz8;	
Isotype	Rabbit IgG
Host	Rabbit
Calculated MW	73300 Da

Frizzled 8 Antibody - Additional Information

Dilution	WB~~1:1000 IHC~~1:100~500
Purification	Affinity-chromatography
Immunogen	A synthesized peptide derived from human Frizzled 8
Description	Receptor for Wnt proteins. Component of the Wnt-Fzd-LRP5-LRP6 complex that triggers beta-catenin signaling through inducing aggregation of receptor-ligand complexes into ribosome-sized signalosomes.
Storage Condition and Buffer	Rabbit IgG in phosphate buffered saline , pH 7.4, 150mM NaCl, 0.02% sodium azide and 50% glycerol. Store at +4°C short term. Store at -20°C long term. Avoid freeze / thaw cycle.

Frizzled 8 Antibody - Protein Information**Name** FZD8**Function**

Receptor for Wnt proteins. Component of the Wnt-Fzd-LRP5-LRP6 complex that triggers beta-catenin signaling through inducing aggregation of receptor-ligand complexes into ribosome-sized signalosomes. The beta-catenin canonical signaling pathway leads to the activation of disheveled proteins, inhibition of GSK-3 kinase, nuclear accumulation of beta-catenin and activation of Wnt target genes. A second signaling pathway involving PKC and calcium fluxes has been seen for some family members, but it is not yet clear if it represents a distinct pathway or if it can be integrated in the canonical pathway, as PKC seems to be required for Wnt-mediated inactivation of GSK-3 kinase. Both pathways seem to involve interactions with G-proteins. May be

involved in transduction and intercellular transmission of polarity information during tissue morphogenesis and/or in differentiated tissues. Coreceptor along with RYK of Wnt proteins, such as WNT1.

Cellular Location

Membrane; Multi-pass membrane protein. Golgi apparatus. Cell membrane; Multi-pass membrane protein. Note=Colocalizes with GOPC at the Golgi apparatus.

Tissue Location

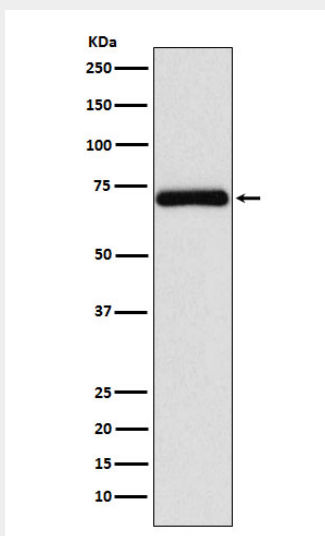
Most abundant in fetal kidney, followed by brain and lung. In adult tissues, expressed in kidney, heart, pancreas and skeletal muscle

Frizzled 8 Antibody - Protocols

Provided below are standard protocols that you may find useful for product applications.

- [Western Blot](#)
- [Blocking Peptides](#)
- [Dot Blot](#)
- [Immunohistochemistry](#)
- [Immunofluorescence](#)
- [Immunoprecipitation](#)
- [Flow Cytometry](#)
- [Cell Culture](#)

Frizzled 8 Antibody - Images



Western blot analysis of Frizzled 8 expression in Jurkat cell lysate.