

**K Cadherin Antibody**  
**Rabbit mAb**  
**Catalog # AP91979****Specification**

---

**K Cadherin Antibody - Product Information**

Application	WB, IP
Primary Accession	<a href="#">P55285</a>
Reactivity	Rat
Clonality	Monoclonal
<b>Other Names</b>	
CAD6; Cdh6; K-cadherin; KCAD; Kidney cadherin;	
Isotype	Rabbit IgG
Host	Rabbit
Calculated MW	88309 Da

**K Cadherin Antibody - Additional Information**

Dilution	WB~~1:1000 IP~~N/A
Purification	Affinity-chromatography
Immunogen	A synthesized peptide derived from human K Cadherin
Description	Cadherins are calcium dependent cell adhesion proteins. They preferentially interact with themselves in a homophilic manner in connecting cells; cadherins may thus contribute to the sorting of heterogeneous cell types.
Storage Condition and Buffer	Rabbit IgG in phosphate buffered saline , pH 7.4, 150mM NaCl, 0.02% sodium azide and 50% glycerol. Store at +4°C short term. Store at -20°C long term. Avoid freeze / thaw cycle.

**K Cadherin Antibody - Protein Information****Name** CDH6**Function**

Cadherins are calcium-dependent cell adhesion proteins. They preferentially interact with themselves in a homophilic manner in connecting cells; cadherins may thus contribute to the sorting of heterogeneous cell types.

**Cellular Location**

Cell membrane; Single-pass type I membrane protein

**Tissue Location**

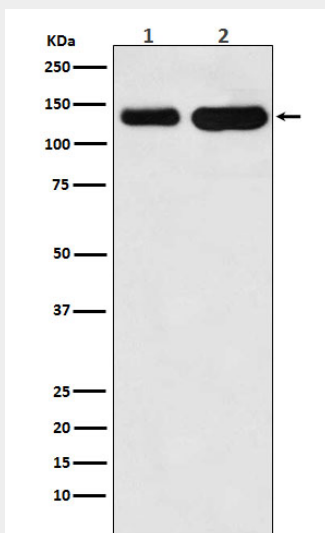
Highly expressed in brain, cerebellum, and kidney. Lung, pancreas, and gastric mucosa show a weak expression. Also expressed in certain liver and kidney carcinomas

### **K Cadherin Antibody - Protocols**

Provided below are standard protocols that you may find useful for product applications.

- [Western Blot](#)
- [Blocking Peptides](#)
- [Dot Blot](#)
- [Immunohistochemistry](#)
- [Immunofluorescence](#)
- [Immunoprecipitation](#)
- [Flow Cytometry](#)
- [Cell Culture](#)

### **K Cadherin Antibody - Images**



Western blot analysis of K Cadherin expression in (1) Jurkat cell lysate; (2) Mouse heart lysate.