

FCGR1B Antibody (C-term)
Affinity Purified Rabbit Polyclonal Antibody (Pab)
Catalog # AP9197B**Specification**

FCGR1B Antibody (C-term) - Product Information

Application	WB, IHC-P-Leica, FC,E
Primary Accession	O92637
Other Accession	A6NKC4 , P12314
Reactivity	Human
Host	Rabbit
Clonality	Polyclonal
Isotype	Rabbit IgG
Antigen Region	248-276

FCGR1B Antibody (C-term) - Additional Information**Other Names**

High affinity immunoglobulin gamma Fc receptor IB, IgG Fc receptor IB, Fc-gamma RIB, FcRIB, hFcgammaRIB, FCGR1B, IGFRB

Target/Specificity

This FCGR1B antibody is generated from rabbits immunized with a KLH conjugated synthetic peptide between 248-276 amino acids from the C-terminal region of human FCGR1B.

Dilution

WB~~1:500
IHC-P-Leica~~1:100
FC~~1:10~50

Format

Purified polyclonal antibody supplied in PBS with 0.09% (W/V) sodium azide. This antibody is purified through a protein A column, followed by peptide affinity purification.

Storage

Maintain refrigerated at 2-8°C for up to 2 weeks. For long term storage store at -20°C in small aliquots to prevent freeze-thaw cycles.

Precautions

FCGR1B Antibody (C-term) is for research use only and not for use in diagnostic or therapeutic procedures.

FCGR1B Antibody (C-term) - Protein Information

Name FCGR1BP ([HGNC:3614](#))

Synonyms FCGR1B, IGFRB

Function May bind to the Fc region of immunoglobulins gamma with a low affinity compared to FCGR1A. May function in the humoral immune response.

Cellular Location

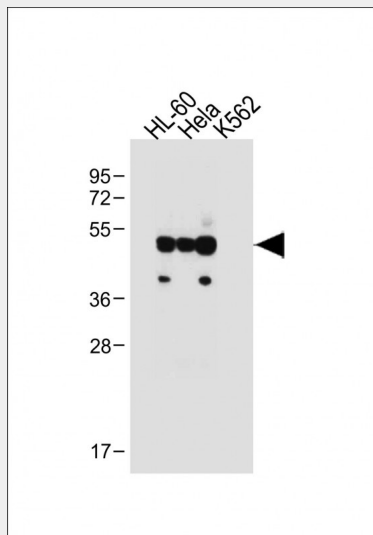
Cell membrane; Single-pass type I membrane protein

FCGR1B Antibody (C-term) - Protocols

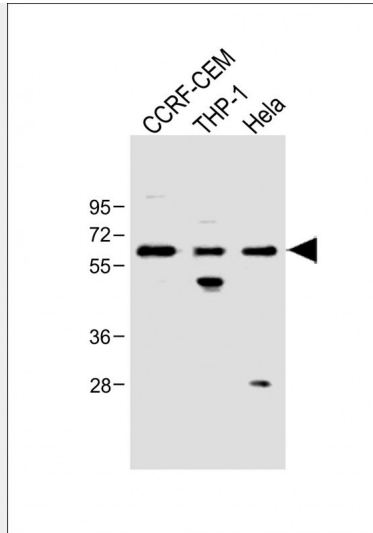
Provided below are standard protocols that you may find useful for product applications.

- [Western Blot](#)
- [Blocking Peptides](#)
- [Dot Blot](#)
- [Immunohistochemistry](#)
- [Immunofluorescence](#)
- [Immunoprecipitation](#)
- [Flow Cytometry](#)
- [Cell Culture](#)

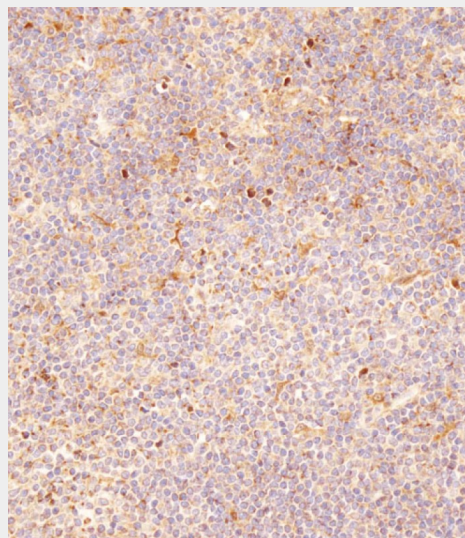
FCGR1B Antibody (C-term) - Images



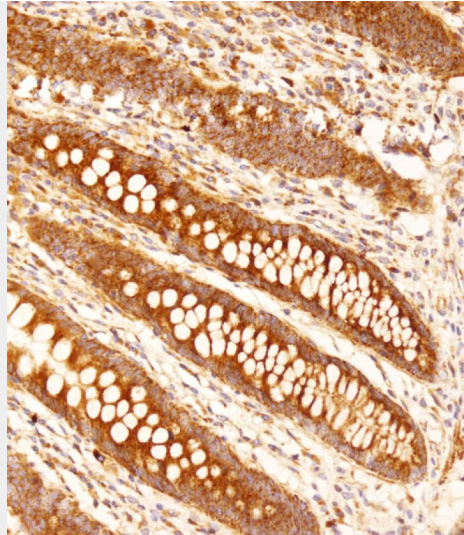
All lanes : Anti-FCGR1B Antibody (C-term) at 1:500 dilution Lane 1: HL-60 whole cell lysate Lane 2: HeLa whole cell lysate Lane 3: K562 whole cell lysate Lysates/proteins at 20 µg per lane. Secondary Goat Anti-Rabbit IgG, (H+L), Peroxidase conjugated at 1/10000 dilution. Predicted band size : 33 kDa Blocking/Dilution buffer: 5% NFD/MTBST.



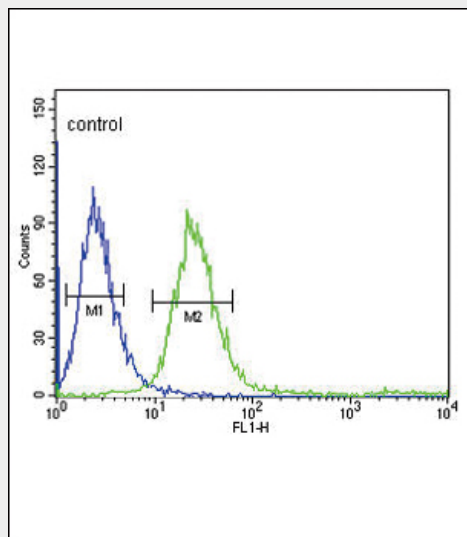
All lanes : Anti-FCGR1B Antibody (C-term) at 1:500 dilution Lane 1: CCRF-CEM whole cell lysate
 Lane 2: THP-1 whole cell lysate Lane 3: HeLa whole cell lysate Lysates/proteins at 20 µg per lane.
 Secondary Goat Anti-Rabbit IgG, (H+L), Peroxidase conjugated at 1/10000 dilution. Predicted band size : 33 kDa
 Blocking/Dilution buffer: 5% NFDm/TBST.



Immunohistochemical analysis of AP9197b on paraffin-embedded human tonsil tissue was performed on the Leica® BOND RXm. Tissue was fixed with formaldehyde at room temperature. Heat induced epitope retrieval was performed by EDTA buffer (pH9. 0). Samples were incubated with primary antibody(1:100) for 15min at room temperature. Leica Bond Polymer Refine Detection was used as the secondary antibody.



Immunohistochemical analysis of AP9197b on paraffin-embedded human appendix tissue was performed on the Leica® BOND RXm. Tissue was fixed with formaldehyde at room temperature. Heat induced epitope retrieval was performed by EDTA buffer (pH9. 0). Samples were incubated with primary antibody(1:100) for 15min at room temperature. Leica Bond Polymer Refine Detection was used as the secondary antibody.



FCGR1B Antibody (C-term) (Cat. #AP9197b) flow cytometric analysis of CEM cells (right histogram) compared to a negative control cell (left histogram).FITC-conjugated goat-anti-rabbit secondary antibodies were used for the analysis.

FCGR1B Antibody (C-term) - Background

FCGR1B may bind to the Fc region of immunoglobulins gamma with a low affinity compared to FCGR1A. This protein may function in the humoral immune response.

FCGR1B Antibody (C-term) - References

Thomas,G., et.al., Nat. Genet. 41 (5), 579-584 (2009)
 Kuwano,Y., et.al., Arch. Dermatol. Res. 298 (10), 493-498 (2007)