

CPS1 Antibody
Rabbit mAb
Catalog # AP91981**Specification****CPS1 Antibody - Product Information**

Application	WB, IHC, FC, ICC, IP
Primary Accession	P31327
Reactivity	Rat
Clonality	Monoclonal

Other Names

Cps1; CPSase 1; CPSase I; CPSASE1; MS738;

Isotype	Rabbit IgG
Host	Rabbit
Calculated MW	164939 Da

CPS1 Antibody - Additional Information

Dilution	WB~~1:1000 IHC~~1:100~500 FC~~1:10~50 ICC~~N/A IP~~N/A
Purification	Affinity-chromatography
Immunogen	A synthesized peptide derived from human CPS1
Description	Involved in the urea cycle of ureotelic animals where the enzyme plays an important role in removing excess ammonia from the cell.
Storage Condition and Buffer	Rabbit IgG in phosphate buffered saline , pH 7.4, 150mM NaCl, 0.02% sodium azide and 50% glycerol. Store at +4°C short term. Store at -20°C long term. Avoid freeze / thaw cycle.

CPS1 Antibody - Protein Information**Name** CPS1**Function**

Involved in the urea cycle of ureotelic animals where the enzyme plays an important role in removing excess ammonia from the cell.

Cellular Location

Mitochondrion. Nucleus, nucleolus. Cell membrane {ECO:0000250|UniProtKB:Q8C196}; Peripheral membrane protein; Extracellular side {ECO:0000250|UniProtKB:Q8C196} Note=Localizes to the cell surface of hepatocytes {ECO:0000250|UniProtKB:Q8C196}

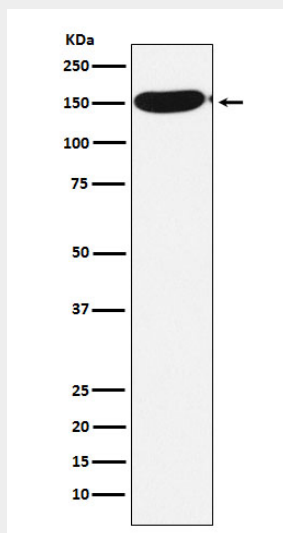
Tissue Location

Primarily in the liver and small intestine.

CPS1 Antibody - Protocols

Provided below are standard protocols that you may find useful for product applications.

- [Western Blot](#)
- [Blocking Peptides](#)
- [Dot Blot](#)
- [Immunohistochemistry](#)
- [Immunofluorescence](#)
- [Immunoprecipitation](#)
- [Flow Cytometry](#)
- [Cell Culture](#)

CPS1 Antibody - Images

Western blot analysis of CPS1 expression in HeLa cell lysate.