

FHL1 Antibody
Rabbit mAb
Catalog # AP91983**Specification**

FHL1 Antibody - Product Information

Application	WB, IHC, IP
Primary Accession	Q13642
Reactivity	Rat
Clonality	Monoclonal
Other Names	
FHL1; FHL1A; FHL1B; FLH1A; RBMX1A; RBMX1B; SLIM1; SLIMMER; XMPMA;	
Isotype	Rabbit IgG
Host	Rabbit
Calculated MW	36263 Da

FHL1 Antibody - Additional Information

Dilution	WB~~1:1000 IHC~~1:100~500 IP~~N/A
Purification	Affinity-chromatography
Immunogen	A synthesized peptide derived from human FHL1
Description	May have an involvement in muscle development or hypertrophy.
Storage Condition and Buffer	Rabbit IgG in phosphate buffered saline , pH 7.4, 150mM NaCl, 0.02% sodium azide and 50% glycerol. Store at +4°C short term. Store at -20°C long term. Avoid freeze / thaw cycle.

FHL1 Antibody - Protein Information**Name** FHL1**Synonyms** SLIM1**Function**

May have an involvement in muscle development or hypertrophy.

Cellular Location

[Isoform 1]: Cytoplasm. [Isoform 2]: Nucleus. Cytoplasm, cytosol. Note=Predominantly nuclear in myoblasts but is cytosolic in differentiated myotubes

Tissue Location

Isoform 1 is highly expressed in skeletal muscle and to a lesser extent in heart, placenta, ovary, prostate, testis, small intestine, colon and spleen. Expression is barely detectable in brain, lung,

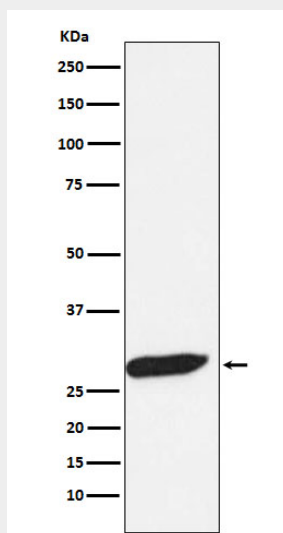
liver, kidney, pancreas, thymus and peripheral blood leukocytes. Isoform 2 is expressed in brain, skeletal muscle and to a lesser extent in heart, colon, prostate and small intestine. Isoform 3 is expressed in testis, heart and skeletal muscle

FHL1 Antibody - Protocols

Provided below are standard protocols that you may find useful for product applications.

- [Western Blot](#)
- [Blocking Peptides](#)
- [Dot Blot](#)
- [Immunohistochemistry](#)
- [Immunofluorescence](#)
- [Immunoprecipitation](#)
- [Flow Cytometry](#)
- [Cell Culture](#)

FHL1 Antibody - Images



Western blot analysis of FHL1 expression in Human fetal muscle lysate.