

FAAH1 Antibody
Rabbit mAb
Catalog # AP91985**Specification****FAAH1 Antibody - Product Information**

Application **WB, IHC**
Primary Accession [O00519](#)
Clonality **Monoclonal**
Other Names
FA2H; FAAH; FAAH-1; Oleamide hydrolase 1; Oleamide hydrolase;

Isotype **Rabbit IgG**
Host **Rabbit**
Calculated MW **63066 Da**

FAAH1 Antibody - Additional Information

Dilution **WB~~1:1000**
IHC~~1:100~500
Purification **Affinity-chromatography**
Immunogen **A synthesized peptide derived from human FAAH1**
Description **Degrades bioactive fatty acid amides like oleamide, the endogenous cannabinoid, anandamide and myristic amide to their corresponding acids, thereby serving to terminate the signaling functions of these molecules.**
Storage Condition and Buffer **Rabbit IgG in phosphate buffered saline , pH 7.4, 150mM NaCl, 0.02% sodium azide and 50% glycerol. Store at +4°C short term. Store at -20°C long term. Avoid freeze / thaw cycle.**

FAAH1 Antibody - Protein Information**Name** FAAH**Synonyms** FAAH1**Function**

Catalyzes the hydrolysis of endogenous amidated lipids like the sleep-inducing lipid oleamide ((9Z)-octadecenamide), the endocannabinoid anandamide (N-(5Z,8Z,11Z,14Z-eicosatetraenoyl)-ethanolamine), as well as other fatty amides, to their corresponding fatty acids, thereby regulating the signaling functions of these molecules (PubMed:17015445, PubMed:19926788, PubMed:9122178). Hydrolyzes

polyunsaturated substrate anandamide preferentially as compared to monounsaturated substrates (PubMed:17015445, PubMed:9122178). It can also catalyze the hydrolysis of the endocannabinoid 2-arachidonoylglycerol (2-(5Z,8Z,11Z,14Z-eicosatetraenoyl)-glycerol) (PubMed:21049984). FAAH cooperates with PM20D1 in the hydrolysis of amino acid-conjugated fatty acids such as N-fatty acyl glycine and N-fatty acyl-L-serine, thereby acting as a physiological regulator of specific subsets of intracellular, but not of extracellular, N-fatty acyl amino acids (By similarity).

Cellular Location

Endomembrane system; Single-pass membrane protein. Cytoplasm, cytoskeleton. Note=Seems to be attached to intracellular membranes and a portion of the cytoskeletal network

Tissue Location

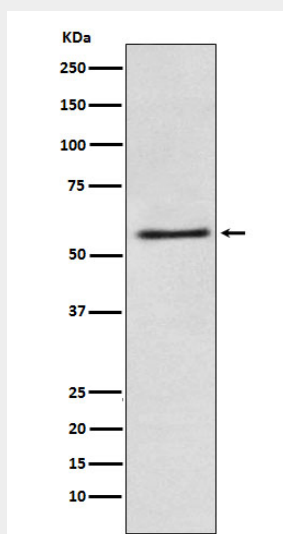
Highly expressed in the brain, small intestine, pancreas, skeletal muscle and testis. Also expressed in the kidney, liver, lung, placenta and prostate.

FAAH1 Antibody - Protocols

Provided below are standard protocols that you may find useful for product applications.

- [Western Blot](#)
- [Blocking Peptides](#)
- [Dot Blot](#)
- [Immunohistochemistry](#)
- [Immunofluorescence](#)
- [Immunoprecipitation](#)
- [Flow Cytometry](#)
- [Cell Culture](#)

FAAH1 Antibody - Images



Western blot analysis of FAAH1 expression in A431 cell lysate.