

NUP153 Antibody
Rabbit mAb
Catalog # AP91987**Specification**

NUP153 Antibody - Product Information

Application	WB, FC, ICC
Primary Accession	P49790
Clonality	Monoclonal
Other Names	
HNUP153; Nup153;	
Isotype	Rabbit IgG
Host	Rabbit
Calculated MW	153938 Da

NUP153 Antibody - Additional Information

Dilution	WB~~1:1000 FC~~1:10~50 ICC~~N/A
Purification	Affinity-chromatography
Immunogen	A synthesized peptide derived from human Nup153
Description	Possible DNA-binding subunit of the nuclear pore complex (NPC). The repeat-containing domain may be involved in anchoring components of the pore complex to the pore membrane.
Storage Condition and Buffer	Rabbit IgG in phosphate buffered saline , pH 7.4, 150mM NaCl, 0.02% sodium azide and 50% glycerol. Store at +4°C short term. Store at -20°C long term. Avoid freeze / thaw cycle.

NUP153 Antibody - Protein Information**Name** NUP153**Function**

Component of the nuclear pore complex (NPC), a complex required for the trafficking across the nuclear envelope. Functions as a scaffolding element in the nuclear phase of the NPC essential for normal nucleocytoplasmic transport of proteins and mRNAs. Involved in the quality control and retention of unspliced mRNAs in the nucleus; in association with TPR, regulates the nuclear export of unspliced mRNA species bearing constitutive transport element (CTE) in a NXF1- and KHDRBS1-independent manner. Mediates TPR anchoring to the nuclear membrane at NPC. The repeat-containing domain may be involved in anchoring other components of the NPC to the pore membrane. Possible DNA-binding subunit of the nuclear pore complex (NPC).

Cellular Location

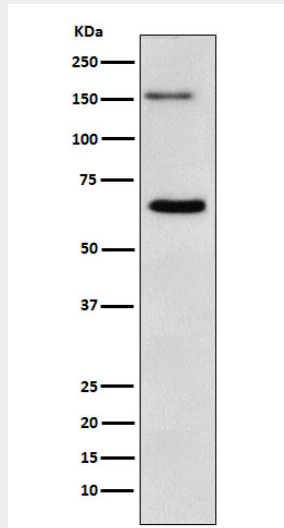
Nucleus. Nucleus membrane. Nucleus, nuclear pore complex. Note=Tightly associated with the nuclear membrane and lamina (By similarity). Localized to the nucleoplasmic side of the nuclear pore complex (NPC) core structure, forming a fibrous structure called the nuclear basket. Dissociates from the NPC structure early during prophase of mitosis. Integrated in the newly assembled nuclear envelope of postmitotic cells early in G1 Colocalized with NUP98 and TPR to the nuclear basket at the nucleoplasmic side of the NPC. Detected in diffuse and discrete intranuclear foci. Remained localized to the nuclear membrane after poliovirus (PV) infection. Colocalizes with NUP210L at the nuclear periphery in round spermatids and at the caudal extremity in elongating spermatids (PubMed:38129135). {ECO:0000250, ECO:0000269|PubMed:38129135}

NUP153 Antibody - Protocols

Provided below are standard protocols that you may find useful for product applications.

- [Western Blot](#)
- [Blocking Peptides](#)
- [Dot Blot](#)
- [Immunohistochemistry](#)
- [Immunofluorescence](#)
- [Immunoprecipitation](#)
- [Flow Cytometry](#)
- [Cell Culture](#)

NUP153 Antibody - Images



Western blot analysis of Nup153 expression in K562 cell lysate.