

E2F4 Antibody
Rabbit mAb
Catalog # AP92003

Specification

E2F4 Antibody - Product Information

Application	WB, IHC, FC, ICC
Primary Accession	Q16254
Clonality	Monoclonal
Other Names	
E2F 4; E2F transcription factor 4; E2F transcription factor 4 p107/p130 binding; E2F4;	
Isotype	Rabbit IgG
Host	Rabbit
Calculated MW	43960 Da

E2F4 Antibody - Additional Information

Dilution	WB~~1:1000 IHC~~1:100~500 FC~~1:10~50 ICC~~N/A
Purification	Affinity-chromatography
Immunogen	A synthesized peptide derived from human E2F4
Description	Transcription activator that binds DNA cooperatively with DP proteins through the E2 recognition site, 5'-TTTC[CG]CGC-3' found in the promoter region of a number of genes whose products are involved in cell cycle regulation or in DNA replication.
Storage Condition and Buffer	Rabbit IgG in phosphate buffered saline , pH 7.4, 150mM NaCl, 0.02% sodium azide and 50% glycerol. Store at +4°C short term. Store at -20°C long term. Avoid freeze / thaw cycle.

E2F4 Antibody - Protein Information

Name E2F4

Function

Transcription activator that binds DNA cooperatively with DP proteins through the E2 recognition site, 5'-TTTC[CG]CGC-3' found in the promoter region of a number of genes whose products are involved in cell cycle regulation or in DNA replication. The DRTF1/E2F complex functions in the control of cell-cycle progression from G1 to S phase. E2F4 binds with high affinity to RBL1 and RBL2. In some instances can also bind RB1. Specifically required for multiciliate cell differentiation: together with MCIDAS and E2F5, binds and activate genes required for centriole biogenesis.

Cellular Location

Nucleus.

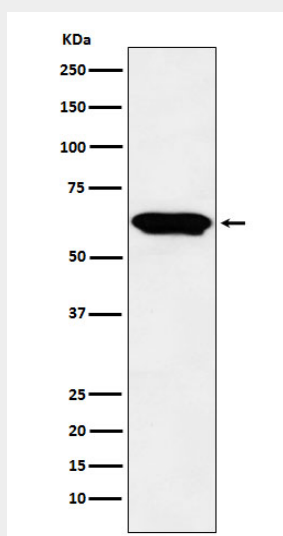
Tissue Location

Found in all tissue examined including heart, brain, placenta, lung, liver, skeletal muscle, kidney and pancreas

E2F4 Antibody - Protocols

Provided below are standard protocols that you may find useful for product applications.

- [Western Blot](#)
- [Blocking Peptides](#)
- [Dot Blot](#)
- [Immunohistochemistry](#)
- [Immunofluorescence](#)
- [Immunoprecipitation](#)
- [Flow Cytometry](#)
- [Cell Culture](#)

E2F4 Antibody - Images

Western blot analysis of E2F4 expression in Raji cell lysate.