

GSTO1 Antibody
Rabbit mAb
Catalog # AP92008

Specification

GSTO1 Antibody - Product Information

Application	WB, IHC, ICC
Primary Accession	P78417
Reactivity	Rat
Clonality	Monoclonal

Other Names

GSTO1 1; Gsto1; GSTTLp28; GSTX; Gtsttl; p28; SPG-R;

Isotype	Rabbit IgG
Host	Rabbit
Calculated MW	27566 Da

GSTO1 Antibody - Additional Information

Dilution	WB~~1:1000 IHC~~1:100~500 ICC~~N/A
Purification	Affinity-chromatography
Immunogen	A synthesized peptide derived from human GSTO1
Description	Exhibits glutathione-dependent thiol transferase and dehydroascorbate reductase activities. Has S-(phenacyl)glutathione reductase activity. Has also glutathione S-transferase activity.
Storage Condition and Buffer	Rabbit IgG in phosphate buffered saline , pH 7.4, 150mM NaCl, 0.02% sodium azide and 50% glycerol. Store at +4°C short term. Store at -20°C long term. Avoid freeze / thaw cycle.

GSTO1 Antibody - Protein Information

Name GSTO1

Synonyms GSTTLP28

Function

Exhibits glutathione-dependent thiol transferase and dehydroascorbate reductase activities. Has S-(phenacyl)glutathione reductase activity. Also has glutathione S-transferase activity. Participates in the biotransformation of inorganic arsenic and reduces monomethylarsonic acid (MMA) and dimethylarsonic acid.

Cellular Location

Cytoplasm, cytosol.

Tissue Location

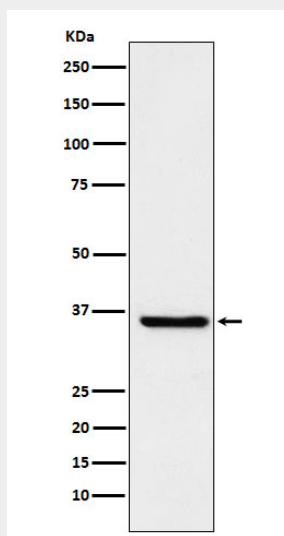
Ubiquitous. Highest expression in liver, pancreas, skeletal muscle, spleen, thymus, colon, blood leukocyte and heart. Lowest expression in brain, placenta and lung.

GSTO1 Antibody - Protocols

Provided below are standard protocols that you may find useful for product applications.

- [Western Blot](#)
- [Blocking Peptides](#)
- [Dot Blot](#)
- [Immunohistochemistry](#)
- [Immunofluorescence](#)
- [Immunoprecipitation](#)
- [Flow Cytometry](#)
- [Cell Culture](#)

GSTO1 Antibody - Images



Western blot analysis of glutathione S transferase Omega 1 expression in HepG2 cell lysate.