

CD27 Antibody
Rabbit mAb
Catalog # AP92015**Specification****CD27 Antibody - Product Information**

Application	WB, FC, ICC
Primary Accession	P26842
Reactivity	Rat
Clonality	Monoclonal
Other Names	
CD27; CD27L receptor; LPFS2; S152; T14; TNFRSF7; TNFSF7; Tp55;	
Isotype	Rabbit IgG
Host	Rabbit
Calculated MW	29137 Da

CD27 Antibody - Additional Information

Dilution	WB~~1:1000 FC~~1:10~50 ICC~~N/A
Purification	Affinity-chromatography
Immunogen	A synthesized peptide derived from human CD27
Description	Receptor for CD70/CD27L. May play a role in survival of activated T-cells. May play a role in apoptosis through association with SIVA1.
Storage Condition and Buffer	Rabbit IgG in phosphate buffered saline , pH 7.4, 150mM NaCl, 0.02% sodium azide and 50% glycerol. Store at +4°C short term. Store at -20°C long term. Avoid freeze / thaw cycle.

CD27 Antibody - Protein Information**Name** CD27 ([HGNC:11922](#))**Function**

Costimulatory immune-checkpoint receptor expressed at the surface of T-cells, NK-cells and B-cells which binds to and is activated by its ligand CD70/CD27L expressed by B-cells (PubMed:28011863). The CD70-CD27 signaling pathway mediates antigen- specific T-cell activation and expansion which in turn provides immune surveillance of B-cells (PubMed:28011863). Mechanistically, CD70 ligation activates the TRAF2-PTPN6 axis that subsequently inhibits LCK phosphorylation to promote phenotypic and transcriptional adaptations of T-cell memory (PubMed:38354704).

In addition, activation by CD70 on early progenitor cells provides a negative feedback signal to leukocyte differentiation during immune activation and thus modulates hematopoiesis (By similarity). Negatively regulates the function of Th2 lymphocytes in the adipose tissue (By similarity).

Cellular Location

Cell membrane; Single-pass type I membrane protein

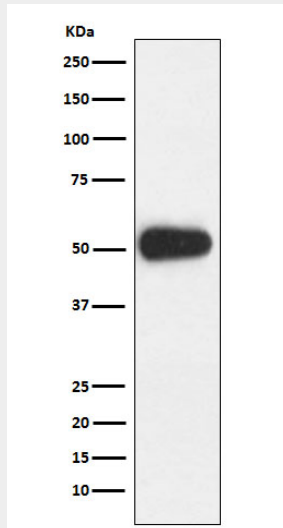
Tissue Location

Found in most T-lymphocytes.

CD27 Antibody - Protocols

Provided below are standard protocols that you may find useful for product applications.

- [Western Blot](#)
- [Blocking Peptides](#)
- [Dot Blot](#)
- [Immunohistochemistry](#)
- [Immunofluorescence](#)
- [Immunoprecipitation](#)
- [Flow Cytometry](#)
- [Cell Culture](#)

CD27 Antibody - Images

Western blot analysis of CD27 expression in Ramos cell lysate.