

**CXCR5 Antibody**  
**Rabbit mAb**  
**Catalog # AP92019****Specification**

---

**CXCR5 Antibody - Product Information**

Application	WB, FC, ICC
Primary Accession	<a href="#">P32302</a>
Reactivity	Rat
Clonality	Monoclonal
<b>Other Names</b>	
BLR1; CD185; Cxcr5; MDR15;	

Isotype	Rabbit IgG
Host	Rabbit
Calculated MW	41955 Da

**CXCR5 Antibody - Additional Information**

Dilution	WB~~1:1000 FC~~1:10~50 ICC~~N/A
Purification	Affinity-chromatography
Immunogen	A synthesized peptide derived from human CXCR5
Description	Cytokine receptor that binds to B-lymphocyte chemoattractant (BLC). Involved in B-cell migration into B-cell follicles of spleen and Peyer patches but not into those of mesenteric or peripheral lymph nodes. May have a regulatory function in Burkitt lymphoma (BL) lymphomagenesis and/or B-cell differentiation.
Storage Condition and Buffer	Rabbit IgG in phosphate buffered saline , pH 7.4, 150mM NaCl, 0.02% sodium azide and 50% glycerol. Store at +4°C short term. Store at -20°C long term. Avoid freeze / thaw cycle.

**CXCR5 Antibody - Protein Information****Name** CXCR5**Synonyms** BLR1, MDR15**Function**

Cytokine receptor that binds to B-lymphocyte chemoattractant (BLC). Involved in B-cell migration into B-cell follicles of spleen and Peyer patches but not into those of mesenteric or peripheral

lymph nodes. May have a regulatory function in Burkitt lymphoma (BL) lymphomagenesis and/or B-cell differentiation.

**Cellular Location**

Cell membrane; Multi-pass membrane protein.

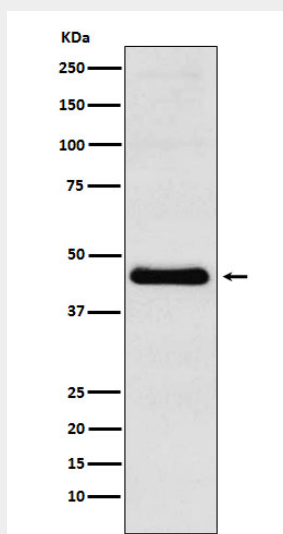
**Tissue Location**

Expression in mature B-cells and Burkitt lymphoma cells

**CXCR5 Antibody - Protocols**

Provided below are standard protocols that you may find useful for product applications.

- [Western Blot](#)
- [Blocking Peptides](#)
- [Dot Blot](#)
- [Immunohistochemistry](#)
- [Immunofluorescence](#)
- [Immunoprecipitation](#)
- [Flow Cytometry](#)
- [Cell Culture](#)

**CXCR5 Antibody - Images**

Western blot analysis of CXCR5 expression in Molt4 cell lysate.