

MPP6 Antibody (Center)
Purified Rabbit Polyclonal Antibody (Pab)
Catalog # AP9201c**Specification**

MPP6 Antibody (Center) - Product Information

Application	FC, WB,E
Primary Accession	O9NZW5
Other Accession	O9JLB0
Reactivity	Human, Mouse
Host	Rabbit
Clonality	Polyclonal
Isotype	Rabbit IgG
Antigen Region	360-388

MPP6 Antibody (Center) - Additional Information**Gene ID** 51678**Other Names**

MAGUK p55 subfamily member 6, Veli-associated MAGUK 1, VAM-1, MPP6, VAM1

Target/Specificity

This MPP6 antibody is generated from rabbits immunized with a KLH conjugated synthetic peptide between 360-388 amino acids from the Central region of human MPP6.

Dilution

FC~~1:10~50

WB~~1:1000

E~~Use at an assay dependent concentration.

Format

Purified polyclonal antibody supplied in PBS with 0.09% (W/V) sodium azide. This antibody is prepared by Saturated Ammonium Sulfate (SAS) precipitation followed by dialysis against PBS.

Storage

Maintain refrigerated at 2-8°C for up to 2 weeks. For long term storage store at -20°C in small aliquots to prevent freeze-thaw cycles.

Precautions

MPP6 Antibody (Center) is for research use only and not for use in diagnostic or therapeutic procedures.

MPP6 Antibody (Center) - Protein Information**Name** PALS2 ([HGNC:18167](#))**Synonyms** MPP6, VAM1

Cellular Location

Membrane; Peripheral membrane protein

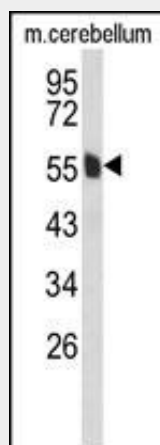
Tissue Location

Abundant in testis, brain, and kidney with lower levels detectable in other tissues

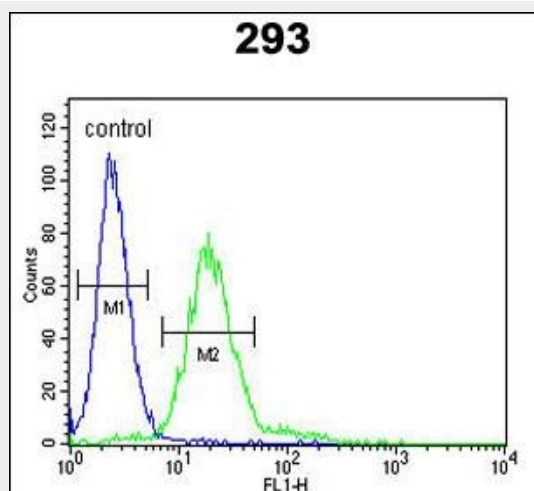
MPP6 Antibody (Center) - Protocols

Provided below are standard protocols that you may find useful for product applications.

- [Western Blot](#)
- [Blocking Peptides](#)
- [Dot Blot](#)
- [Immunohistochemistry](#)
- [Immunofluorescence](#)
- [Immunoprecipitation](#)
- [Flow Cytometry](#)
- [Cell Culture](#)

MPP6 Antibody (Center) - Images

Western blot analysis of MPP6 Antibody (Center) (Cat. #AP9201c) in mouse cerebellum tissue lysates (35ug/lane). MPP6 (arrow) was detected using the purified Pab.



MPP6 Antibody (Center) (Cat. #AP9201c) flow cytometric analysis of 293 cells (right histogram) compared to a negative control cell (left histogram). FITC-conjugated goat-anti-rabbit secondary antibodies were used for the analysis.

MPP6 Antibody (Center) - Background

Members of the peripheral membrane-associated guanylate kinase (MAGUK) family function in tumor suppression and receptor clustering by forming multiprotein complexes containing distinct sets of transmembrane, cytoskeletal, and cytoplasmic signaling proteins. All MAGUKs contain a PDZ-SH3-GUK core and are divided into 4 subfamilies, DLG-like (see DLG1; MIM 601014), ZO1-like (see TJP1; MIM 601009), p55-like (see MPP1; MIM 305360), and LIN2-like (see CASK; MIM 300172), based on their size and the presence of additional domains. MPP6 is a member of the p55-like MAGUK subfamily.

MPP6 Antibody (Center) - References

Scheel, A.K., et.al., Ann. Rheum. Dis. 65 (5), 595-600 (2006)
Rush, J., et.al., Nat. Biotechnol. 23 (1), 94-101 (2005)
Rush, J., et.al., Nat. Biotechnol. 23 (1), 94-101 (2005)