

**PSMD4 Antibody**  
**Rabbit mAb**  
**Catalog # AP92023****Specification**

---

**PSMD4 Antibody - Product Information**

Application	<b>WB, FC, IP</b>
Primary Accession	<a href="#">P55036</a>
Reactivity	<b>Rat</b>
Clonality	<b>Monoclonal</b>

**Other Names**

PSMD4; AF; AF-1; ASF; MCB1; Rpn10; S5A; pUB-R5;

Isotype	<b>Rabbit IgG</b>
Host	<b>Rabbit</b>
Calculated MW	<b>40737 Da</b>

**PSMD4 Antibody - Additional Information**

Dilution	<b>WB~~1:1000</b> <b>FC~~1:10~50</b> <b>IP~~N/A</b>
Purification	<b>Affinity-chromatography</b>
Immunogen	<b>A synthesized peptide derived from human PSMD4</b>
Description	<b>Binds and presumably selects ubiquitin-conjugates for destruction. Displays selectivity for longer polyubiquitin chains. Modulates intestinal fluid secretion.</b>
Storage Condition and Buffer	<b>Rabbit IgG in phosphate buffered saline , pH 7.4, 150mM NaCl, 0.02% sodium azide and 50% glycerol. Store at +4°C short term. Store at -20°C long term. Avoid freeze / thaw cycle.</b>

**PSMD4 Antibody - Protein Information****Name** PSMD4**Synonyms** MCB1**Function**

Component of the 26S proteasome, a multiprotein complex involved in the ATP-dependent degradation of ubiquitinated proteins. This complex plays a key role in the maintenance of protein homeostasis by removing misfolded or damaged proteins, which could impair cellular functions, and by removing proteins whose functions are no longer required. Therefore, the proteasome participates in numerous cellular processes, including cell cycle progression, apoptosis, or DNA damage repair. PSMD4 acts as an ubiquitin receptor subunit through ubiquitin- interacting motifs

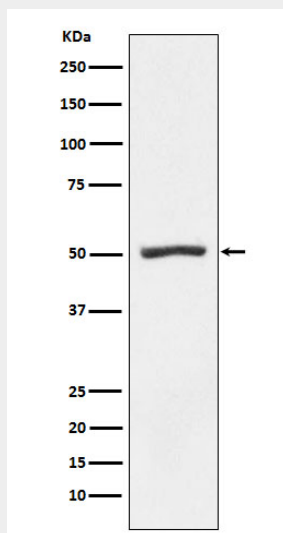
and selects ubiquitin-conjugates for destruction. Displays a preferred selectivity for longer polyubiquitin chains.

### **PSMD4 Antibody - Protocols**

Provided below are standard protocols that you may find useful for product applications.

- [Western Blot](#)
- [Blocking Peptides](#)
- [Dot Blot](#)
- [Immunohistochemistry](#)
- [Immunofluorescence](#)
- [Immunoprecipitation](#)
- [Flow Cytometry](#)
- [Cell Culture](#)

### **PSMD4 Antibody - Images**



Western blot analysis of Proteasome 19S S5A expression in K562 cell lysate.