

Fbx32 Antibody
Rabbit mAb
Catalog # AP92027**Specification**

Fbx32 Antibody - Product Information

Application	WB, ICC
Primary Accession	Q969P5
Reactivity	Rat
Clonality	Monoclonal
Other Names	
Atrogin 1; ATROGIN1; fbxo25; FBXO32; MAFbx;	
Isotype	Rabbit IgG
Host	Rabbit
Calculated MW	41637 Da

Fbx32 Antibody - Additional Information

Dilution	WB~~1:1000 ICC~~N/A
Purification	Affinity-chromatography
Immunogen	A synthesized peptide derived from human Fbx32
Description	Substrate recognition component of a (SKP1-CUL1-F-box protein) E3 ubiquitin-protein ligase complex which mediates the ubiquitination and subsequent proteasomal degradation of target proteins.
Storage Condition and Buffer	Rabbit IgG in phosphate buffered saline , pH 7.4, 150mM NaCl, 0.02% sodium azide and 50% glycerol. Store at +4°C short term. Store at -20°C long term. Avoid freeze / thaw cycle.

Fbx32 Antibody - Protein Information**Name** FBXO32**Function**

Substrate recognition component of a SCF (SKP1-CUL1-F-box protein) E3 ubiquitin-protein ligase complex which mediates the ubiquitination and subsequent proteasomal degradation of target proteins. Probably recognizes and binds to phosphorylated target proteins during skeletal muscle atrophy. Recognizes TERF1.

Cellular Location

Cytoplasm. Nucleus Note=Shuttles between cytoplasm and the nucleus

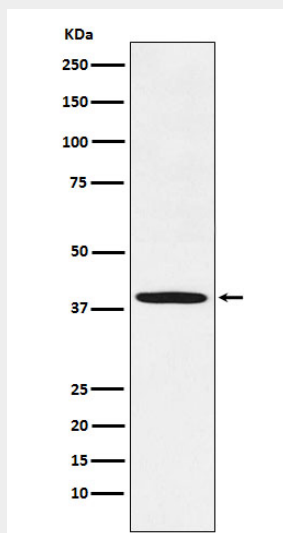
Tissue Location

Specifically expressed in cardiac and skeletal muscle

Fbx32 Antibody - Protocols

Provided below are standard protocols that you may find useful for product applications.

- [Western Blot](#)
- [Blocking Peptides](#)
- [Dot Blot](#)
- [Immunohistochemistry](#)
- [Immunofluorescence](#)
- [Immunoprecipitation](#)
- [Flow Cytometry](#)
- [Cell Culture](#)

Fbx32 Antibody - Images

Western blot analysis of Fbx32 expression in Human skeletal muscle lysate.