

**SFRP4 Antibody**  
**Rabbit mAb**  
**Catalog # AP92031****Specification**

---

**SFRP4 Antibody - Product Information**

Application	WB, IHC, FC, ICC
Primary Accession	<a href="#">Q6FHJ7</a>
Reactivity	Rat
Clonality	Monoclonal
<b>Other Names</b>	
FRP4; FrpHE; PYL; Sfrp4;	

Isotype	Rabbit IgG
Host	Rabbit
Calculated MW	39827 Da

**SFRP4 Antibody - Additional Information**

Dilution	WB~~1:1000 IHC~~1:100~500 FC~~1:10~50 ICC~~N/A
Purification	Affinity-chromatography
Immunogen	A synthesized peptide derived from human SFRP4
Description	Soluble frizzled-related proteins (sFRPS) function as modulators of Wnt signaling through direct interaction with Wnts. They have a role in regulating cell growth and differentiation in specific cell types.
Storage Condition and Buffer	Rabbit IgG in phosphate buffered saline , pH 7.4, 150mM NaCl, 0.02% sodium azide and 50% glycerol. Store at +4°C short term. Store at -20°C long term. Avoid freeze / thaw cycle.

**SFRP4 Antibody - Protein Information****Name** SFRP4**Synonyms** FRPHE**Function**

Soluble frizzled-related proteins (sFRPS) function as modulators of Wnt signaling through direct interaction with Wnts. They have a role in regulating cell growth and differentiation in specific cell types (By similarity). SFRP4 plays a role in bone morphogenesis. May also act as a regulator of adult uterine morphology and function. May also increase apoptosis during ovulation possibly through modulation of FZ1/FZ4/WNT4 signaling (By similarity). Has phosphaturic effects by

specifically inhibiting sodium-dependent phosphate uptake (PubMed:<a href="http://www.uniprot.org/citations/12952927" target="\_blank">12952927</a>).

#### Cellular Location

Secreted. Note=Cytoplasmic in ovarian tumor cells

#### Tissue Location

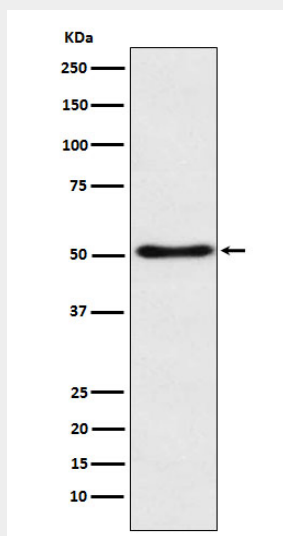
Expressed in mesenchymal cells. Highly expressed in the stroma of proliferative endometrium. Expressed in cardiomyocytes Shows moderate to strong expression in ovarian tumors with expression increasing as the tumor stage increases. In ovarian tumors, expression levels are inversely correlated with expression of CTNNB1 (at protein level).

### SFRP4 Antibody - Protocols

Provided below are standard protocols that you may find useful for product applications.

- [Western Blot](#)
- [Blocking Peptides](#)
- [Dot Blot](#)
- [Immunohistochemistry](#)
- [Immunofluorescence](#)
- [Immunoprecipitation](#)
- [Flow Cytometry](#)
- [Cell Culture](#)

### SFRP4 Antibody - Images



Western blot analysis of SFRP4 expression in 293T cell lysate.