

**OLFM4 Antibody**  
**Rabbit mAb**  
**Catalog # AP92034****Specification**

---

**OLFM4 Antibody - Product Information**

Application	<b>WB, IP</b>
Primary Accession	<a href="#">Q6UX06</a>
Reactivity	<b>Rat</b>
Clonality	<b>Monoclonal</b>
<b>Other Names</b>	
GC1; GW112; hGC 1; hOLFID; olfactomedin 4; OlfD; OLFM4; OLM4;	
Isotype	<b>Rabbit IgG</b>
Host	<b>Rabbit</b>
Calculated MW	<b>57280 Da</b>

**OLFM4 Antibody - Additional Information**

Dilution	<b>WB~~1:1000</b> <b>IP~~N/A</b>
Purification	<b>Affinity-chromatography</b>
Immunogen	<b>A synthesized peptide derived from human OLFM4</b>
Description	<b>An antiapoptotic factor that promotes tumor growth. Promotes proliferation of pancreatic cancer cells by favoring the transition from the S to G2/M phase. Facilitates cell adhesion.</b>
Storage Condition and Buffer	<b>Rabbit IgG in phosphate buffered saline , pH 7.4, 150mM NaCl, 0.02% sodium azide and 50% glycerol. Store at +4°C short term. Store at -20°C long term. Avoid freeze / thaw cycle.</b>

**OLFM4 Antibody - Protein Information****Name** OLFM4**Synonyms** GW112**Function**

May promote proliferation of pancreatic cancer cells by favoring the transition from the S to G2/M phase. In myeloid leukemic cell lines, inhibits cell growth and induces cell differentiation and apoptosis. May play a role in the inhibition of EIF4EBP1 phosphorylation/deactivation. Facilitates cell adhesion, most probably through interaction with cell surface lectins and cadherin.

**Cellular Location**

Secreted, extracellular space. Mitochondrion. Note=Subcellular location is not clearly defined: has

been shown to be secreted (PubMed:16566923), but also in the mitochondrion (PubMed:15059901, PubMed:20724538), cytoplasm and plasma membrane (PubMed:20724538) and in the nucleus (PubMed:15059901)

#### **Tissue Location**

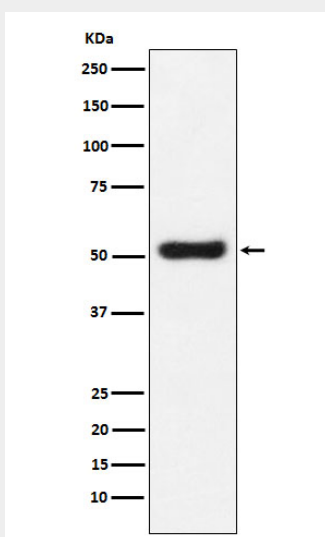
Expressed during myeloid lineage development. Much higher expression in bone marrow neutrophils than in peripheral blood neutrophils (at protein level). Strongly expressed in the prostate, small intestine and colon and moderately expressed in the bone marrow and stomach. Overexpressed in some pancreatic cancer tissues

#### **OLFM4 Antibody - Protocols**

Provided below are standard protocols that you may find useful for product applications.

- [Western Blot](#)
- [Blocking Peptides](#)
- [Dot Blot](#)
- [Immunohistochemistry](#)
- [Immunofluorescence](#)
- [Immunoprecipitation](#)
- [Flow Cytometry](#)
- [Cell Culture](#)

#### **OLFM4 Antibody - Images**



Western blot analysis of OLFM4 expression in LnCaP cell lysate.