

**ADH6 Antibody (Center)**  
**Purified Rabbit Polyclonal Antibody (Pab)**  
**Catalog # AP9203c****Specification**

---

**ADH6 Antibody (Center) - Product Information**

Application	WB, IHC-P, FC,E
Primary Accession	<a href="#">P28332</a>
Reactivity	Human
Host	Rabbit
Clonality	Polyclonal
Isotype	Rabbit IgG
Calculated MW	39073
Antigen Region	209-240

**ADH6 Antibody (Center) - Additional Information****Gene ID** 130**Other Names**

Alcohol dehydrogenase 6, ADH6

**Target/Specificity**

This ADH6 antibody is generated from rabbits immunized with a KLH conjugated synthetic peptide between 209-240 amino acids from the Central region of human ADH6.

**Dilution**

WB~~1:1000  
IHC-P~~1:50~100  
FC~~1:10~50

**Format**

Purified polyclonal antibody supplied in PBS with 0.09% (W/V) sodium azide. This antibody is prepared by Saturated Ammonium Sulfate (SAS) precipitation followed by dialysis against PBS.

**Storage**

Maintain refrigerated at 2-8°C for up to 2 weeks. For long term storage store at -20°C in small aliquots to prevent freeze-thaw cycles.

**Precautions**

ADH6 Antibody (Center) is for research use only and not for use in diagnostic or therapeutic procedures.

**ADH6 Antibody (Center) - Protein Information****Name** ADH6**Function** Alcohol dehydrogenase (PubMed:[1755855](#)). Catalyzes the NAD- dependent oxidation of

primary alcohols to the corresponding aldehydes (PubMed:[1755855](#)). Oxidizes secondary alcohols to the corresponding ketones (By similarity).

**Cellular Location**

Cytoplasm.

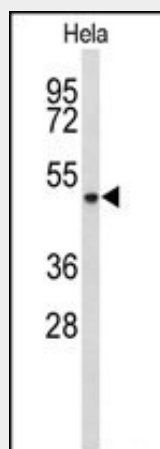
**Tissue Location**

Stomach and liver..

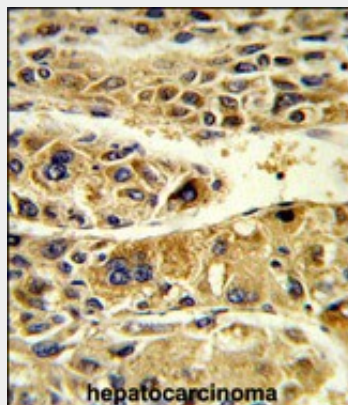
**ADH6 Antibody (Center) - Protocols**

Provided below are standard protocols that you may find useful for product applications.

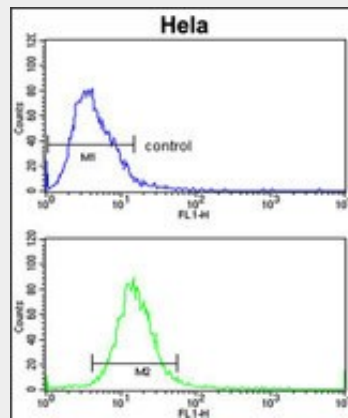
- [Western Blot](#)
- [Blocking Peptides](#)
- [Dot Blot](#)
- [Immunohistochemistry](#)
- [Immunofluorescence](#)
- [Immunoprecipitation](#)
- [Flow Cytometry](#)
- [Cell Culture](#)

**ADH6 Antibody (Center) - Images**

Western blot analysis of ADH6 Antibody (Center) (Cat. #AP9203c) in HeLa cell line lysates (35ug/lane). ADH6 (arrow) was detected using the purified Pab.



Formalin-fixed and paraffin-embedded human hepatocarcinoma reacted with ADH6 Antibody (Center), which was peroxidase-conjugated to the secondary antibody, followed by DAB staining. This data demonstrates the use of this antibody for immunohistochemistry; clinical relevance has not been evaluated.



ADH6 Antibody (Center) (Cat. #AP9203c) flow cytometric analysis of HeLa cells (bottom histogram) compared to a negative control cell (top histogram). FITC-conjugated goat-anti-rabbit secondary antibodies were used for the analysis.

#### **ADH6 Antibody (Center) - Background**

ADH6 encodes class V alcohol dehydrogenase, which is a member of the alcohol dehydrogenase family. Members of this family metabolize a wide variety of substrates, including ethanol, retinol, other aliphatic alcohols, hydroxysteroids, and lipid peroxidation products. This protein is expressed in the stomach as well as in the liver, and it contains a glucocorticoid response element upstream of its 5' UTR, which is a steroid hormone receptor binding site.

#### **ADH6 Antibody (Center) - References**

Cui,R., et.al., Gastroenterology 137 (5), 1768-1775 (2009)  
Saito,A., et.al., J. Hum. Genet. 54 (6), 317-323 (2009)  
Tabakoff,B., et.al., BMC Biol. 7, 70 (2009)