

Prostatic Acid Phosphatase Antibody
Rabbit mAb
Catalog # AP92053**Specification****Prostatic Acid Phosphatase Antibody - Product Information**

| | |
|--|------------------------|
| Application | WB, IHC, ICC, IP |
| Primary Accession | P15309 |
| Clonality | Monoclonal |
| Other Names | |
| 5'-NT; 5'-nucleotidase; ACP3; PAP; Prostatic acid phosphatase; TMPase; | |
| Isotype | Rabbit IgG |
| Host | Rabbit |
| Calculated MW | 44566 Da |

Prostatic Acid Phosphatase Antibody - Additional Information

| | |
|------------------------------|--|
| Dilution | WB~~1:1000 IHC~~1:100~500 ICC~~N/A IP~~N/A |
| Purification | Affinity-chromatography |
| Immunogen | A synthesized peptide derived from human PAP (prostatic acid phosphatase) |
| Description | A non-specific tyrosine phosphatase that dephosphorylates a diverse number of substrates under acidic conditions (pH 4-6) including alkyl, aryl, and acyl orthophosphate monoesters and phosphorylated proteins. Has lipid phosphatase activity and inactivates lysophosphatidic acid in seminal plasma. |
| Storage Condition and Buffer | Rabbit IgG in phosphate buffered saline , pH 7.4, 150mM NaCl, 0.02% sodium azide and 50% glycerol. Store at +4°C short term. Store at -20°C long term. Avoid freeze / thaw cycle. |

Prostatic Acid Phosphatase Antibody - Protein Information**Name** ACP3 ([HGNC:125](#))**Synonyms** ACP3**Function**

A non-specific tyrosine phosphatase that dephosphorylates a diverse number of substrates under acidic conditions (pH 4-6) including alkyl, aryl, and acyl orthophosphate monoesters and phosphorylated proteins (PubMed:<a href="http://www.uniprot.org/citations/10506173"

target="_blank">10506173, PubMed:15280042, PubMed:20498373, PubMed:9584846). Has lipid phosphatase activity and inactivates lysophosphatidic acid in seminal plasma (PubMed:10506173, PubMed:15280042).

Cellular Location

[Isoform 1]: Secreted

Tissue Location

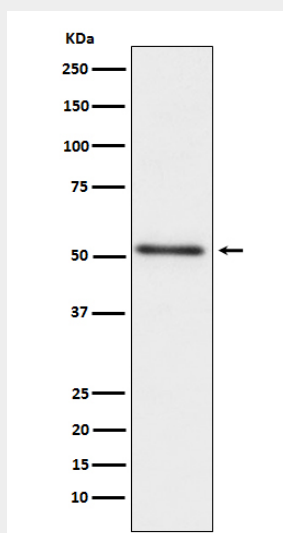
Highly expressed in the prostate, restricted to glandular and ductal epithelial cells. Also expressed in bladder, kidney, pancreas, lung, cervix, testis and ovary. Weak expression in a subset of pancreatic islet cells, squamous epithelia, the pilosebaceous unit, colonic neuroendocrine cells and skin adnexal structures. Low expression in prostate carcinoma cells and tissues

Prostatic Acid Phosphatase Antibody - Protocols

Provided below are standard protocols that you may find useful for product applications.

- [Western Blot](#)
- [Blocking Peptides](#)
- [Dot Blot](#)
- [Immunohistochemistry](#)
- [Immunofluorescence](#)
- [Immunoprecipitation](#)
- [Flow Cytometry](#)
- [Cell Culture](#)

Prostatic Acid Phosphatase Antibody - Images



Western blot analysis of PAP (prostatic acid phosphatase) expression in human prostate cancer lysate.