

LI Cadherin Antibody
Rabbit mAb
Catalog # AP92054**Specification**

LI Cadherin Antibody - Product Information

Application	WB, IHC, IP
Primary Accession	Q12864
Clonality	Monoclonal
Other Names	
Cadherin 16; Cadherin 17; CDH16; Cdh17; Formerly CDH16; HPT 1; LI-cadherin; Liver Cadherin; liver intestine cadherin;	
Isotype	Rabbit IgG
Host	Rabbit
Calculated MW	92219 Da

LI Cadherin Antibody - Additional Information

Dilution	WB~~1:1000 IHC~~1:100~500 IP~~N/A
Purification	Affinity-chromatography
Immunogen	A synthesized peptide derived from human LI-Cadherin
Description	Cadherins are calcium dependent cell adhesion proteins. They preferentially interact with themselves in a homophilic manner in connecting cells; cadherins may thus contribute to the sorting of heterogeneous cell types. LI-cadherin may have a role in the morphological organization of liver and intestine. Involved in intestinal peptide transport.
Storage Condition and Buffer	Rabbit IgG in phosphate buffered saline , pH 7.4, 150mM NaCl, 0.02% sodium azide and 50% glycerol. Store at +4°C short term. Store at -20°C long term. Avoid freeze / thaw cycle.

LI Cadherin Antibody - Protein Information**Name** CDH17**Function**

Cadherins are calcium-dependent cell adhesion proteins. They preferentially interact with themselves in a homophilic manner in connecting cells; cadherins may thus contribute to the sorting of heterogeneous cell types. LI-cadherin may have a role in the morphological organization of liver and intestine. Involved in intestinal peptide transport.

Cellular Location

Cell membrane; Single-pass type I membrane protein

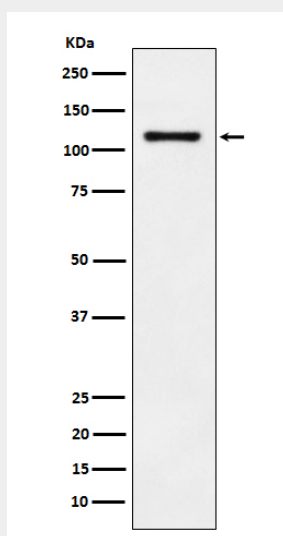
Tissue Location

Expressed in the gastrointestinal tract and pancreatic duct. Not detected in kidney, lung, liver, brain, adrenal gland and skin.

LI Cadherin Antibody - Protocols

Provided below are standard protocols that you may find useful for product applications.

- [Western Blot](#)
- [Blocking Peptides](#)
- [Dot Blot](#)
- [Immunohistochemistry](#)
- [Immunofluorescence](#)
- [Immunoprecipitation](#)
- [Flow Cytometry](#)
- [Cell Culture](#)

LI Cadherin Antibody - Images

Western blot analysis of LI-Cadherin expression in HT-29 cell lysate.